



Anti-Theft Top Opening Safe

Great home safe for important documents, jewelry and more. Features a digital electronic lock and emergency over-ride key. Made of heavy gauge steel. Interior light. Mounting hardware included.

#51220
95 Safety Bucks



Flat Panel LCD TV

Features include: 4:3 aspect ratio (15" model) or 16:9 ratio (19" model); ATSC/NTSC tuner; 1080i/720p/480p/480i compatible. Parental control with V-chip, closed caption, wall mount compatible. Full remote control.

#53046 15" TV 387 Safety Bucks
#53045 19" TV 467 Safety Bucks



Leatherman® Steens® Hunting Knife

Incorporates both functionality and safety into a top-notch, fixed blade knife. Rotating handle covers the blade, simultaneously exposing a generous gut hook that's easy to hold, use and sharpen. Also in the handle is an aggressive bone saw that locks into place over the 3.75" drop-point blade. Blade and gut hook are constructed of S30V® steel for the best in edge retention, flexibility and hardness; can be sharpened with conventional stones. Full leather sheath and diamond-coated sharpening rod are included. (Three views shown above; one knife will ship when ordered.)

#55097 137 Safety Bucks



Heavy Duty Bench Vise

360-degree swivel base with dual locking system. Replaceable hardened steel jaws. Polished steel anvil for hammering. Jaw width 5"; jaw opening 5"; throat depth 2-5/8".

#56121 45 Safety Bucks

Bushnell Trail Sentry® Digital Game Camera

Features a 2.1 MP digital camera with Infrared Night Vision -- color photos by day, night vision by night. Infrared sensor is motion activated. With xenon flash, LCD



display, SD card slot and more.
#54105 227 Safety Bucks



Hideaway Hose Reel

Holds up to 225 feet of 5/8" garden hose. Easylink system for a watertight connection between the hose reel and hoses. Attractive design fully conceals the hose and reel.

#51216
62 Safety Bucks



Super Size Kick Croquet Set

Fun time for the whole family! Includes (2) 16" diameter cloth covered croquet balls, (9) 20" PVC wickets with ground stakes and (2) 20" stakes with flags.

#52052
30 Safety Bucks



6 Gallon Direct Drive Air Compressor

Perfect for small projects around the house! Heavy-duty cast-iron cylinder with easy access oil fill. Welded handle with grip for easy mobility. Includes 25' recoil air hose with quick coupler, blow gun with connectors, adapter fitting and more.

#56115
131 Safety Bucks

Heated Chip & Dip Tray

Perfect for hot spinach dip, cheese dips, chili and more! Removable 22-ounce stone-ware center insert with durable chip tray. Unique heating base, powered by an in-line switch. Can be used with cold dips and veggies, too.



#51218 30 Safety Bucks

Wildlife Series Cap

Beautifully embroidered cap available in 4 wildlife designs. Brushed cotton chino fabric with adjustable velcro strap. **Front of cap will be embroidered with your company logo.** Choice of Elk (Sand), Trout (Khaki), Mallard (Brown), or Buck (Hunter).

16 Safety Bucks each

- #57050 Elk
- #57048 Buck
- #57049 Trout
- #57051 Mallard



Radio Controlled Toy Muscle Car

Full function RC 1967 Camaro SS in miniature, with real sounds like accelerating, braking, engine rumbling and more! Rubber tires, independent suspension, lighted chrome engine with high detail and more.

#52053 29 Safety Bucks



Men's or Ladies' Bracelet Watch by Bulova®

Stainless steel bracelet watch with white dial and mineral glass crystal. With second hand and date calendar. Water resistant to 30 meters / 100 feet.

- #59022 Men's 41 Safety Bucks
- #59021 Ladies' 41 Safety Bucks



Kitchen Tools Set

Great kitchen tools set in a ceramic holder on revolving wooden base for easy access. Includes a 5-piece stainless steel set (solid and slotted spoon, turner, whisk and tongs), 5-piece bamboo set (spoon, fork, slotted turned, pastry brush and tongs), and an 8-piece nylon set (spoons, turner, ladle, pasta fork and more).

#51219 30 Safety Bucks

Mantel Clock by Bulova®

A beautiful piece for home or office. Features a solid wood case in walnut finish, and decorative screened glass panels. Metal dial with revolving pendulum. Quartz movement, battery-operated chime and standard movement are guaranteed to be accurate to within three minutes a year. Overall size is 11.5" high x 8.25" wide x 5" deep.



#51224 103 Safety Bucks



Jerky Hanger

Making jerky has never been easier! Strong stainless steel rack holds 9 stainless steel skewers. Rack sits inside an 18" x 13" aluminum pan to catch the drips. Place the rack in the pan and place in your oven or smoker. Rack folds flat for easy storage inside the pan. Includes package of Jerky Seasoning for 2 pounds of meat.

#54106 28 Safety Bucks



17 Lb. Meat Mixer

Stainless steel meat mixer makes sausage making simple! Holds up to 17 lbs. of meat. Just put the seasonings, water and meat into the hopper and turn the handles. Hopper and 4 mixing paddles are stainless steel, making them easy to clean and rust resistant. Includes plexiglass cover. Tub size is approximately 11" x 8.75" x 11".

#54107 135 Safety Bucks



Panasonic 5 CD Changer Shelf System

Great features like a 5 CD changer with full remote control and AM/FM digital tuner. System is iPod and XM Satellite ready, and supports audio CDs, CD-Rs and CD-RWs. Powerful two-way speakers for superior sound.

#53058 224 Safety Bucks

Auto Wrench

Automatically adjusts with the touch of a button. Fits any size nut or bolt up to 1.25". Professionally heat treated hardened steel; 220 ft/lbs. torque. Works in tight areas. Fast motor adjusts jaw quickly. Includes 2 AAA batteries.

#56108 40 Safety Bucks





INNOVATIVE SAFETY SOLUTIONS, LLC

9" Band Saw



2.5 AMP band saw with 2 speeds: 1400 and 2700 SFPM (surface feet per minute). LED work light and Xacta® laser guide for cutting accuracy. Rack and pinion table adjustment. Blade length of 59.25 - 59.5" (150.5 - 151 cm); blade width of 1/8"-3/8" (3.2 cm - 9.5 cm). Maximum cutting capacity of 3.5"; throat capacity of 9".

#56106
109 Safety Bucks

Digital Photo Frame

Show off your memories with this 7" widescreen digital photo frame! With 128 MB of internal memory and automatic plug and play with most memory cards. Designed to be easy to use, lets you save and delete images with using your PC. Measures approx. 9" x 6.25" x 1.25".

#53047
146 Safety Bucks



Lifesize Canada Goose Sculpture

Hand painted, limited edition Canada Goose. Beautiful color and detail. Measures 20" long x 9" wide x 9.5" high.

#51230 **157 Safety Bucks**



Rechargeable Garden Sprayer

Lightweight and comfortable to use with a built in shoulder strap and concaved sides. No pumping needed; sprays up to 10 gallons on a charge. Tank removed easily for hassle-free filling and cleaning.

#56109 **77 Safety Bucks**



Glass Batter Bowl

Great for mixing everything from pancakes to cookies to cake mixes! Batter bowl has a 2-quart capacity, and includes plastic lid for storage.

#51215 **11 Safety Bucks**



10-Piece Glass Bakeware Set

Includes 3-quart baking dish with lid, 8" square cake dish with lid, 2-quart casserole with glass cover, and (2) 6-ounce custard cups with plastic lids.

#51238 **29 Safety Bucks**



Glass Mixing Bowl Set

Beautiful, functional pieces that will last and last! Mixing bowls in three sizes: 1-quart, 1.5-quart and 2.5-quart.

#51214 **12 Safety Bucks**



ATV Storage Cover

Heavy duty, all-weather polyester travel cover with an integrated trailering system and fuel tank access door. Tension panels cinch cover down tight for highway travel. Dual rear air vents to reduce moisture and wind lofting. Elastic cord in bottom hem for a fast, snug fit. Available in Size L (75" L x 45" W x 35" H) or XL (85" L x 48" W x 40" H).

#55099 Lg **31 Safety Bucks**
#55100 XLg **36 Safety Bucks**

Shower CD Radio



AM/FM receiver with built-in antennas, and front loading CD player. With adjustable nylon rope hanger, desk stand and waterproof mylar speaker. Fog-resistant mirror. Overall size is 9.75" high x 7.5" wide x 3" deep.

#53054 **42 Safety Bucks**

Bissell SPOTlifter® Handheld Cleaner

Cordless and rechargeable, ready to quickly clean spots and spills. Powerful spray and suction to lift and remove tough spills. Removable collection tank. With spray nozzle and brush.



#51241 **52 Safety Bucks**



CD Clock Radio

Can play CDs, CD-Rs, CD-RWs. Gentle wake with increasing alarm volume. Digital tuning with presets. Wake to CD, radio or buzzer with dual alarm times. With snooze feature and battery backup.

#53050 56 Safety Bucks



DVD / VCR Combo Deck

Watch movies from your DVD collection or VHS library with this space-saving combo player. Also plays MP3 and JPEG formats, so you can also listen to music and view digital photos.

#53059 126 Safety Bucks



PreyMaster Digital Caller

Easy to use handheld calling unit allows you to play two calls at once for greater depth and realism. Choose from 12 sounds on three changeable memory cards. All-weather speaker, 10-foot cord and 50-foot extension cord. Comes with coyote and general predator cards. Runs on (4) AA batteries, not included. Includes remote.

#54104 139 Safety Bucks

Deluxe Motorcycle Cover

Heavy duty outdoor cover with interior heat shield, non-scratch windshield liner and air vents. Protects against damaging weather, dirt and UV rays. Elasticized bottom hem for a fast, custom-style fit. Reinforced bottom grommets allow use of a cable lock (not included). Available in (2) sizes: Cruiser (for wider handle bars) and Touring.

#54102 Cruising cover
61 Safety Bucks

#54103 Touring cover
71 Safety Bucks



iPod Nano

It's the small iPod with a big idea: video. Now the world's most popular music player lets you enjoy TV shows, movies, podcasts and more. 4GB model. Larger, brighter display with the most pixels per inch of any Apple display, ever. Play up to 5 hours of video or 24 hours of audio on a single charge. In Silver.

#53056
219 Safety Bucks



Baby Millie

Great gift for the little gal! Millie laughs, cries and drinks a bottle just like a real baby. Includes bottle, pillow, blanket and clothes. Needs 3 AA batteries, not included. For ages 3 - 8.

#52054 41 Safety Bucks

Digital Ear Thermometer

Accurate readings in about one second. Backlit digital display lets you view the results at night -- no need to turn on the lights. Auto power off. Runs on 2 "AAA" batteries, not included.

#51232
39 Safety Bucks



Padded Hitch Tote

Easy to carry padded fabric case stores tow bars, protects vehicle from dents. Handy inside pocket for locks and pins, big easy access zipper. Fits draw bars with an 8" drop to a 4" rise. Measures approximately 18" x 4" x 8".

#54101 13 Safety Bucks



Stainless Steel Mixing Bowl Set

Stainless steel mixing bowl set features 3 bowls (1-quart, 2-quart and 3-quart sizes) with matching plastic covers.

#51240
23 Safety Bucks



Paring Knife and Sharpener Set

This gift set includes two paring knives and a sharpener -- great for home use or gift giving! Set includes the Super Parer, Heavy Duty Parer and Quick-Edge Knife Sharpener.

#51237 18 Safety Bucks

**Auto Darkening Welding
 Helmet**

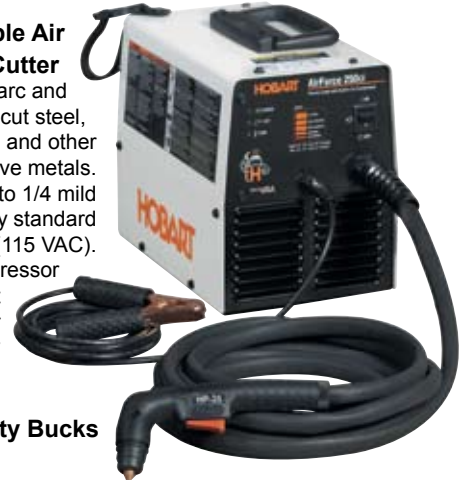
Light from the welding arc stimulates the viewing area to automatically darken (in less than 3 milliseconds) and protect your eyes. ANSI Z87.1 compliant.



#56118 95 Safety Bucks

**Hobart Portable Air
 Plasma Cutter**

Uses an electrical arc and compressed air to cut steel, aluminum and other conductive metals. Designed to cut up to 1/4 mild steel. Powered by standard household voltage (115 VAC). Built-in air compressor and lightweight inverter power supply for portability and convenience.



**#56110
 1,041 Safety Bucks**



Digital Camera
 7.1 megapixels for beautiful prints at any size. 2.8" LCD screen makes it easy to view and share pictures. With internal Red Eye Fix, optical image stabilization and more.

#53055 216 Safety Bucks



Garmin Nuvi® 350 GPS Unit

Preloaded with City Navigator® NT street maps, including a hefty database of points of interest (POIs), restaurants, fuel and ATM locations and more. Touch the screen to enter a destination, and the Nuvi® takes you there with maps and voice directions. Other features include MP3 player, JPG picture viewer, currency converter, calculator and much more.

#53044 541 Safety Bucks

**Stanley® Pro Mo-
 bile Tool Chest**

Mobile tool box with large wheels and comfortable telescopic handle for great portability. Featuring strong polycarbonate lids, metal latches and parts organizer on lid. Lockable. Measures 16 x 24 x 14.



#56117 56 Safety Bucks



**Revlon® Fast Heat
 Paraffin Bath**

Smooths rough skin on hands, elbows, and feet. Adjustable temperature control. Includes 4 lbs. of paraffin wax, 60 disposable plastic glove liners, and one pair of thermal mitts.

#51225 50 Safety Bucks



DVD Camcorder

Records onto 8cm DVD discs in either standard 4:3 mode or 16:9 widescreen mode. With 2.7" color LCD monitor. Many great features like optical image stabilizer, autofocus, backlight compensation, stereo microphone with wind noise reduction and more.

#53048 474 Safety Bucks



**Work Support
 Stand**

Three stands in one: stationary support stand, single roller stand and multi-directional roller stand. Supports up to 250 lbs. Folds flat.

**#56116
 25 Safety Bucks**

**Computer Carrying
 Case**

For notebook computers up to 17". Zip front pocket with deluxe organizer. Zip rear compartment with file divider and ample storage. Shoulder strap, or will slip over the handle of upright luggage.



#51227 38 Safety Bucks



Personal UV Monitor

Exposure timer uses UV/SPF and skin type to calculate recommended exposure time, which automatically updates with changes in UV intensity. Also monitors current temperature. With digital clock and countdown timer, splashproof case and wrist strap.

#55098 28 Safety Bucks



USB Laptop Travel Kit

Great for taking your laptop on the road! Includes 4 different prong attachments to connect any USB device, and has a retractable USB cable to extend the distance between the device and your laptop. Includes earbud headphones, USB mouse and Ethernet cable, all in a handy travel case.

#51228 47 Safety Bucks



Wall Mount Flying Pheasant Sculpture

Hand painted, limited edition miniature flying pheasant. Beautiful color and detail. Measures 18" high x 21" wide x 12" deep.

#51231 148 Safety Bucks



Cash Register and Scanner

Lots of fun for the little ones! Cash register comes with play money and credit/debit card machine, and various play groceries. Needs 3 AAA batteries, not included. For ages 3 - 8.

#52056 33 Safety Bucks



SKIL Cordless Drill & Flashlight

18V cordless drill with 2 batteries, charger and carry bag. Drill features 2 speeds with forward/reverse indicator and removable bit index. Charge meter to indicate remaining battery power. Soft grip handle. 3/8" keyless chuck. Includes bonus cordless pivoting head flashlight.

#56111 125 Safety Bucks

Automatic Egg Cooker

Cooks eggs to perfection, almost any way you like them! This appliance can poach, soft cook and hard cook eggs. Indicator light goes out when eggs are done, and has automatic shut off.



#51236 33 Safety Bucks

Clock Radio with iPod® Dock

Wake to your iPod®, 6 soothing nature sounds, radio or buzzer. Dual alarms with snooze feature. Large digital LDC display. AM/FM radio with digital tuning and volume control. Charge your iPod® while it's docked.



#53049 78 Safety Bucks



Reciprocating Saw

Variable speed adjusts stroke speed for clean or fast cuts. On-tool blade storage. Locking blade clamp system locks securely without tools. 120V, 8 amps, over 6 feet of cord for ease of use. Includes storage bag.

#56120 80 Safety Bucks

Toy Bosch Grand Prix Racer

Lots of fun for those budding mechanics! Little ones can build their own Grand Prix race car with this toy cordless drill, screwdriver and car kit. Requires 3 AA batteries, not included. For ages 3 - 6.

#52055 25 Safety Bucks





Multi-Fryer

This one appliance slow cooks, boils, sautes, bakes and deep fries various foods. The 8-quart (3-quart oil capacity) cast aluminum non-stick pot provides even heating. Easy-to-use touch pad with LCD display controls time, function and cooking temperatures. With digital timer, wire steam rack, cool touch handles and much more.

#51226 93 Safety Bucks



Folding Camp Chair

Navy blue folding camp chair constructed of durable 600D nylon and steel tubular frame -- holds up to 300 lbs. Arm rests each have their own cup holder. Includes drawstring carrying sack with shoulder strap.

#55101 13 Safety Bucks

Portable DVD Player
 7" widescreen (16:9) format plays DVDs and CDs, CD-Rs, CD-RWs, etc. Anti-skip circuitry for smooth play. Convenient onscreen display. Headphone jack and audio/video input jack for video games. With remote control and DC car adaptor.



**#53053
 151 Safety Bucks**



Sliding Compound Miter Saw

10" sliding compound miter saw features a powerful 15 AMP motor. With blade brake, arbor lock for fast changes, cutting table with positive stops at

various degree-graduations. 19-3/4" table with 9" deep legs. Includes a 30-tooth carbide tipped saw blade, adjustable work clamp and sawdust collection bag.

#56119 169 Safety Bucks



Nesting Wood Duck Lamp

Perfect outdoor accent for home, cabin or office. Handcrafted design in beautiful detail. 18" diameter shade with 10" base. Measures approx. 31" tall.

#51229 221 Safety Bucks



Leupold VX-I Riflescope

Multicoat lens system delivers exceptional brightness and clarity. Features Leupold's classic lockable eyepiece for a secure focus. Rugged and waterproof in all conditions. Available in Matte Black, Gloss Black or Silver.

Please specify.

#54108 280 Safety Bucks

14" Cut-off Saw

Powerful 15 AMP motor with a top cutting speed of 3,800 RPM. D-handle provides comfortable use and control. 2.5 HP, swivelling vise clamp for 0-45 degrees left or right. Arbor of 1", maximum cutting diameter of 4.5" or 11.4 cm. With Xacta® laser guide for increased cutting accuracy.

**#56107
 190 Safety Bucks**



Microfiber Comfort Pillow

Made with Cool Core® ventilated foam that promotes air circulation. Completely hypoallergenic. With SilverGuard® antibacterial treatment that inhibits the growth of mites, mold and fungus. 300 thread count cover. Measures 25" x 19" x 6.5".

#51217 56 Safety Bucks



Handheld Pressure Washer

1400 psi pressure washer is lightweight -- just 18 pounds. Powerful motor and long-lasting maintenance free pump. With 30-foot high pressure hose and 35-foot power cord. Detergent bottle included. Built-in accessory storage.

#56114 102 Safety Bucks

Wireless Rain Gauge

Self-emptying rain cup that measures, then eliminates collected rainfall. Memory stores daily, 9-day historical and total rainfall records. Also displays indoor and outdoor temperatures. Requires 2 AA and 2 AAA batteries, not included.

**#51233
 56 Safety Bucks**





Singer Sewing Machine

Full featured sewing machine includes built-in accessory storage, front-loading bobbins and quick and easy threading. Machine has 7 built-in stitches, 3 needle

positions, 4-step buttonholer and a powerful motor.

#51239 190 Safety Bucks



Century Two-Mantle Lantern & Case

Features push-button piezo igniter for match-free lighting, durable porcelain dome, with glass globe and unbreakable steel-mesh globe. Adjusts from dim to bright, with quiet, non-flickering operation. Accommodates both 14.1- and 16.4-ounce propane cylinders (not included.) Includes durable nylon carrying case.

#55102 38 Safety Bucks

Precision Rain Gauge

Precision manufacturing provides accurate measuring. Made of heavy-duty, UV-resistant polycarbonate material to stand up to years of rough weather and full sunlight without fading or corroding. No metal parts to rust! Easy installation and removal.

#51234 33 Safety Bucks



Cobra GMRS/FRS 2-Way Radios

With a range of up to 12 miles, these units are ideal for outdoor adventures. Backlit LCD displays, water resistant. Includes rechargeable batteries and 2 port desktop charger.

#53057 49 Safety Bucks



Home/Office Allergen Reducer

Effective at capturing dust, dust mite debris, mold spores, pollen, smoke and pet dander. Two speeds cover up to 100 square feet; filter lasts up to 120 days.

#51221 43 Safety Bucks



Motorcycle Tail Bag

Easy to fit with adjustable straps and quick-release buckles. Large zippered cargo compartment, reflective trim. Extreme fabric shell with PVC backing for maximum weather protection.

#54100 43 Safety Bucks



6 Drawer Tool Chest

All steel construction with powder coated finish for rust resistance and durability. Features includes piano hinged lid, fully extending ball-bearing drawer slides for easy access to your tools, top locking system for security, and recessed handles for easy carrying.

Measures 26" x 12" x 14.5"

#56113 108 Safety Bucks

10" Drill Press

3.2 AMP, 1/3 HP drill press with 5 speeds from 570 - 3050 RPM.

Chuck size is 1/2". Tilting work table from 0-45 degrees left or right. Table measures 7-5/8" square; overall height is 28-1/4".

#56112 151 Safety Bucks



Toaster Oven

Fits 6 slices of bread. Stainless steel exterior with continuous clean interior. Features a broil grid and bake pan, removable crumb tray. With keep warm setting and ready-bell timer.

#51235 84 Safety Bucks

Please see the enclosed Safety Buck Value List for award items that have been discontinued from the main awards catalog.

Questions? Contact us at Stec's Innovative Safety Solutions • 605-348-0100 • email: stecs@stecsintl.com



#55022 Bushnell Compact Binoculars

Fully coated optics for superior light transmission and brightness. Focus-free feature stays in focus at most viewing distances. Non-slip rubber armor for firm grip. 10 x 25mm. 300 ft. field of view.



#55021 Bushnell Perma-Focus 10 x 50 Binoculars

Fully coated optics for superior light transmission and brightness. Focus-free feature stays in focus at most viewing distances. Rubber armor for firm grip. 10 x 50mm. 393 ft. field of view.

#55043 Kershaw Fire Starter

Quality built for top performance. Magnesium steel shaft with striker, with molded plastic handle. Includes lanyard. 1-3/4" shaft, overall length is approx. 3".



#55023 Bushnell Yardage Pro® Trophy® Rangefinder

Bow and gun hunters alike will find the Trophy rangefinder vital to their mission! Target range of 5 to 999 yards. Simply tap the button and get the laser-measured distance on the digital display, which appears right in the lens. Power/obj: 5 x 20mm. Includes carrying case and strap.



#55020 Silva Guide Compass

Sighting compass with full size mirror. Dial with 2 degree graduations, inch and metric scales, declination scale and N at 360 with red orienting arrow for needle match. Includes lanyard.



#55018 Lansky Knife Sharpening Kit

For gourmet, butcher sporting and serrated knives. Includes coarse, medium, fine, ultra-fine stones. With guide rods, oil and multi-angle knife clamp.



#55001 Schrade Old Timer "Beast" Knife

High carbon steel blade, for strength and sharpening ease. Practically indestructible Delrin® handle. 4-7/8", includes carrying sheath.



#55041 Sportman's Blade Trader Set

Stainless steel blades with co-polymer handles. Hunting blade is 3-1/2" long; saw and fillet blades are 6" long each. Includes harness/leather sheath.



#55064 "American Eagle" Buck Pocket Knife

Classic SlimLine style, stainless steel lockback pocket knife. 2-3/4" closed, blade length is 1-7/8", drop point.



#55065 Buck MiniBuck Knife

Hi-tech thermoplastic handle makes this Buck's smallest, lightest knife. 2-7/8" closed, drop point. Lockback. With clip to attach to any keychain.



#55042 Kershaw Shotgun Shell Knife

Unique pocket knife is 2-5/8" closed. Stainless steel blades -- one knife, one screwdriver/file, 2" each. Handle is rosewood with brass bolsters.





#55029 Coleman Double Sleeping Bag

Two bags zip together for a roomy 66" x 75" sleeping bag. Cotton cover with cotton flannel lining, filled with 6 lbs. of Hollofil 808, rated down to 40 degrees. (Company logo embroidered on 2 stuff sacks.)



#55026 Coleman 20 Degree Rated Sleeping Bag

King sized bag measures 39" x 81", fits most body types up to 6'4". Rated for temperatures down to 20 degrees, with 5 lbs. of Hollofil 808 fill. Cotton cover and cotton flannel liner. Two like bags can zip together to form larger bag. Wrap'n'Roll carrier is attached so packaging is easy.



#55027 Coleman Mummy-Style Sleeping Bag

32" x 82" nylon bag with 54 oz. Coletherm™4 fill between nylon cover and lining. Rated for temperatures down to 0 degrees. Fits most body types up to 6'2". Includes stuff sack.



#55030 Coleman Self-Inflating Camp Pad

Made of durable 70-denier nylon, spot-bonded for added comfort. With attached compression straps. Just open the valve and pad self-inflates. Measures 76" x 24" x 2" and weighs just 5 lbs.



#55031 Coleman Junior Sleeping Bag

Bag measures 26" x 60" and comfort rated down to 40 degrees. Durable nylon cover and soft cotton lining, with 2 lbs. of ThermoTech insulation. Cover and liner colors vary on this model.



#55032 Coleman Air Bed with Pump

75" x 55" x 9" airbed made of heavy-duty PVC with double-lock valve. Wide side gussets for added comfort and stability. Flocked top provides a slip-free surface. Includes Coleman Quickpump, which operates on (4) D-cell batteries, not included, and carry sack.



#55011 Roll-a-Cot

Patented tension system to eliminate end bars. With breathable mesh top, strong aluminum frame (up to 250 lbs.) and carrying pouch. 74"L x 28"W x 15"H. Rolls down to 36" x 5" x 5". Weight: 10 lbs.



#55010 Roll-a-Table

Aluminum framed table with a heat-sealed, hinged, roll-up top constructed of strong wood slats. Table is 32" x 32" x 28" high. Rolls down to 32" x 5-1/2". Weight: 10 lbs.



#55028 Coleman Folding Table

Hardboard top, braced u-legs, metal frame and hinges. With luggage-style carry handle, no assembly required. Seats up to 8 people. 30"W x 60"L x 28"H.



#55035 Coleman "Extreme" Wheeled Cooler

50-quart capacity. Keeps ice up to 6 days at temperatures of up to 90 degrees F. Two-way handles make it easy to lift and carry from tight spaces. Channel drain for no-tilt draining. Stores up to 72 cans with ice. Large wheels make it easy to pull, even on rough terrain.



#55037 Coleman Tent Fan
 Attaches by magnet without harming tent sides. Operates on 1 D-cell battery, not included. 9" x 9" x 3".



#55038 Coleman Tent Light
 Secures to tent with magnet without harming tent material. Mountable anywhere, powerful xenon bulb. Easy on/off switch, operates on 4 AA-cell batteries, not included. Approx. 10" x 7" x 3-1/2".



#55040 Coleman WeatherMaster 3-Room Tent
 Exclusive WeatherTec(TM) System is guaranteed to keep you dry, includes a fitted fly for extra protection from the elements. With 3 separate rooms with zippered dividers for added privacy. 76" of vertical space at tent's center. Sleeps 6 to 8 people; overall size is 17' x 9'.

#55033 Screen Gazebo
 This screen gazebo measures 15' x 13' and features a Weather Armor® roof, mesh walls and 2 T-style doors. Enamel coated steel chain-corded frame and multi-spoked center hub for easy set-up. Hexagon shaped for plenty of room to move.



#55024 Sun Dome 9' x 7' Tent
 Sleeps 3 to 4 campers. Center height of 59". Shock-corded poles. With Coleman's WeatherTec System, guaranteed to keep you dry. Rainfly covers the door and windows. Separate storage bags for tent, poles and stakes; easy to follow instructions sewn into tent storage bag.



#55034 Coleman Portable Catalytic Heater
 Electronic ignition, large heating head. Built-in fan provides maximum heat circulation, operates on 2 D-cell batteries, not included. Operates up to 7 hours on one 16 oz. disposable propane cylinder, not included. Approx. 16" x 12" x 10".



#55046 Folding Camper's Saw
 Self sharpening blade of tempered spring steel, allows for sawing in both directions. Self locking handle made of high impact plastic. Blade is 7", open length is 15".



#55012 Century Porta Potty
 Tough thermoplastic construction with easy to clean surfaces. 5 gallon holding tank.



#55044 Portable Folding Camp Chair
 Folds and stores in a drawstring closure bag. Frame is coated steel tubing, seat and back are PVC-backed nylon. Opens to standard height seat.



#55050 Portable Picnic Table
 Frame is strong, durable anodized aluminum and steel. Table surface is easy-to-clean, high impact plastic. Folds up compactly for easy storage. 1" diameter hole in center of table for umbrella, not included. Attached carry handle. Seats 4.





#55049 Cast Iron Fry Pan
15-1/2" diameter cast iron pan. Resists chipping and warping. Easy to clean cooking surface.

#55019 Lodge Dutch Oven
6-quart dutch oven made of superior quality cast iron. With deep integral legs and flanged lid. 12" diameter x 3-3/4" deep.



#55052 Enamel Camping Tableware Set
Made of high quality durable steel, coated with glazed enamel. Includes 4 pieces each: 10-1/2" dinner plate, 13 ounce coffee mug, 6" bowl, 7" spoon.



#55053 Waterproof Lantern with Remote
Waterproof, high impact plastic construction. Remote allows operation from up to 50' away. Safe to use in enclosed areas like tents and campers. Folding handle for hanging and carrying. Krypton bulb included, with 6V DC jack with waterproof plug cover. Remote runs on 2 AAA batteries, lantern runs on 4 D batteries, none included.

#55054 Camp Axe
Fiberglass handle with rubber grip. Drop forged polished steel head for strength and durability. Flat back for hammering.



#55039 Coleman Propane Lantern
Operates on 16.4-ounce propane cylinder, not included. Porcelainized ventilator won't rust. Electronic ignition for easy, matchless lighting. Includes carrying case.

#55051 Camper's Shower
Heats 5 gallons of water for showers. Includes on/off control, hose and shower head. Sturdy handle for carrying or hanging. Can also be used for washing dishes.



#55016 Fold Away Soft Side Cooler
Insulated and leak proof cooler is made of 420-denier nylon. With top slip pocket and insulated exterior pocket. Expands to be packed full, and folds down when empty for easy storage. Measures approximately 12" x 11" x 9-1/2" when open, folds down to 3" when empty. In Red.



#55067 CharBroil Tabletop Gas Grill
Powder coated steel body with chrome wire grate and filtered regulator. With 187 square inches of cooking surface. Operates on fuel bottle, not included.

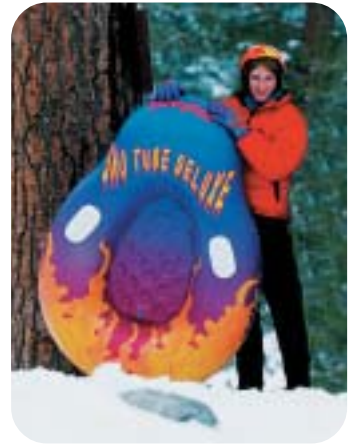


#55055 Camper's Shovel
Tri-fold style. Blade and handle are powder coated steel. Steel collar locks blade in place. Blade is 6", pick length is 4". Folded size is 7-1/2" x 5".





#55085 Oval Swimming Pool
 High quality pool measures 8' x 6-1/2'. With patented upright I-beams that can support an adult sitting on the pool's sides without collapsing. Will not distort when filled with water. Pool sits approx. 21" high and holds roughly 186 gallons of water.



#55095 Snow Tube Deluxe
 For kids, teen and adults! Patented pear shaped design offers high back support and more buoyancy up front. Extra tall handles for snow gloves. Made of cold-weather resistant PVC and can be inflated and deflated outdoors.

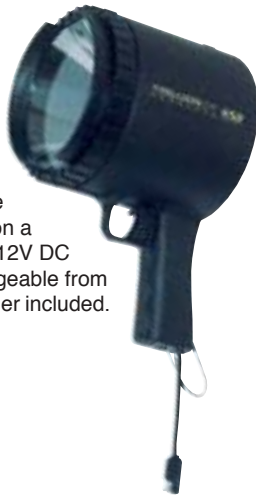
#55060 Inflatable 2-Person Boat Kit

Heavyweight vinyl with 3 separate air chambers. Inflatable floor. Self locking safety valves. Two oarlocks. Repair kit included. Includes 2 plastic oars and foot pump. Made to hold 2 people, maximum total weight of 340 lbs.



#55015 Nite Tracker Cordless Spotlight

1 million candle power, quartz halogen lamp in polypropylene housing. Runs 40 minutes on a single charge, or from any 12V DC power source. Rechargeable from 110 or 12V, charger included.



#55059 Emergency Radio/Flashlight

Ideal for all emergency situations. Perfect size for car, boat, camper, more. Operates from either solar power, hand crank, DC power or 2 AA batteries, not included. Weather proof designed AM/FM radio, siren and flashlight.



#55048 "AA" Mini Maglite
 High intensity, linear focusing from floodlight to spot beam. Precision machined aluminum alloy case with knurled grip. Anodized inside and out for corrosion resistance. Spare bulb inside tailcap.

#55083 Upgrade Kit for AA Mini Maglite

Features bright white LEDs that last up to 4 times longer than original incandescent bulbs. Also with push-button switch, replaces the end cap, and creates an instant on/off switch without adjusting the focus. Makes using the flashlight more convenient. (Flashlight not included.)



#55061 Hydration Backpack

Features a 2 liter U.S. made "Liquid Solutions" reservoir with patented bite valve. Ergonomic design evenly distributes weight and fits snugly to the upper back to minimize fatigue. Lightweight design features an "air-mesh" back for maximum ventilation. Zippered cargo pocket holds CD player or personal gear. Adjustable waist strap.



#55072 Nite Ize® Grip 'n Clip
 Neoprene sleeve for warmth and secure, comfortable grip. Adjustable handstrap, can slide over your wrist to free your hand. Utility clip secures to belt or waistband. Fits most D-cell flashlights. (Flashlight not included.)

#55071 Nite Ize® Mini Pock-It
 Holds your mini flashlight and multi-tool (neither included) in one holster. Utility clip securely attaches to waistband or belt. Stacked pockets for compact and safety storage. Fits belts up to 2-1/4" wide.





#55078 Hunting Shell Birdhouse
Perfect for the backyard or hunting cabin! Birdhouse is made of hand-painted resin material, with back door access, drainage holes, ventilation holes. With hanging cord. Measures 10-1/2" x 5" x 5".



#55079 Graniteware Coffee Pot Birdhouse
Perfect for the backyard! Hand-painted resin back opens for easy cleaning. Overall size is approximately 9" x 8" x 6".



#55075 Hurricane Lantern Bird Feeder
Charming bird feeder looks like an old-time hurricane lantern. Painted metal with plastic seed hopper. Measures approximately 12" x 5-1/2" x 7-1/2".

#55077 Hunting Shell Picture Frame
Show off this season's trophy or the kid's first hunting trip! Made of hand-painted resin material with easel back. Holds a 4" x 6" photo. Overall frame size is 8-1/2" x 5-1/2".



#55076 Tent & Sleeping Bag Party Lights
Fun for camping, evening barbeques or those outdoor sleep-overs. Set includes 5 tent lights and 5 sleeping bag lights on a 12-foot light cord with end to end connectability; rated for indoor or outdoor use.

#55074 Camp Cupboard Organizer
The ultimate portable way to keep gear clean and organized while hunting, camping, fishing, even at home! 3 inner shelves; zippered front closure keeps out the elements. Top straps with adjustable buckles allow the Camp Cupboard to hang squarely from uneven poles or branches. Patented design measures 28" x 22" x 10" open; 12" x 10" x 3" closed.



#55080 Peak® 600 Watt DC/AC Power Inverter
Making it easy and safe to tap into the power of your vehicle's battery to get the electricity you need while in the outdoors. Ideal for powering appliances like televisions, computers, drills, mini refrigerators, coffee makers and more. Compact, portable and lightweight for ease of use anywhere.



#55069 Bushnell Digital Binoculars with Camera
Powerful, long-range binocular with a 35 megapixel digital camera built-in. Compact, yet packed with features like 10x magnification (8x camera magnification) and 8 MB of internal memory. LCD screen, fully coated optics. Includes USB cable and software, neck strap and carrying case.



#55082 Grilla Gear Skillet
Made of stainless steel with a nonstick surface. Designed like a regular skillet but with small holes to let in plenty of heat and smoky grilled flavor. Use with vegetables, shrimp or other meats. A handy alternative to threading skewers. Convenient looped handle.



#55036 Coleman RoadTrip Grill
 Powerful 20,000 BTUs for hot, fast cooking, even in cold weather. Versatile, removable mix-n-match surfaces for use as grill, griddle or stove. Matchless lighting, full-size 285 sq. inch cooking space. Operates on 16 ounce propane cylinder (not included) and is 20 lb. tank adaptable. Folds to compact size with easy to pull handle and wheels.



#55084 Mosquito Magnet Defender
 Don't spend another season stuck indoors -- enjoy the outdoors again protected by the Mosquito Magnet. Scientifically proven to virtually eliminate mosquitos from your yard. Also works on biting midges, black flies and sandflies. Bugs are drawn to the trap and are quietly vacuumed into a net where they dehydrate and die.



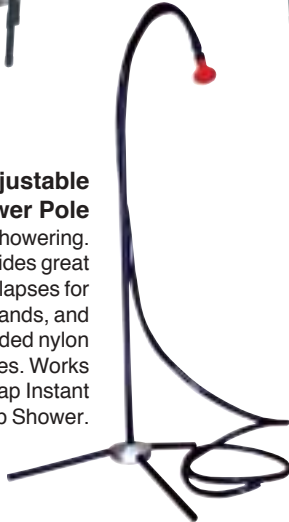
#55081 Dual Burner Gas Camping Stove
 2 cast iron burners. Heavy gauge chrome-plated cooking surface for easy clean-up. Folding legs and built-in carry handle for easy transport and storage. With removable wind guard to protect flames while cooking. Type 1 connector for easy hook-up to standard 20 lb. propane tanks.



#55087 Hot Tap Instant Camp Shower
 Portable and self-contained, equipped with a stainless steel burner. Provides endless hot water in just seconds. Includes a rugged plastic case that doubles as a 4 gallon water container. Powerful pump delivers great water pressure (requires 4 D-cell batteries, not included). Great for family camping.

#55088 Adjustable Shower Pole

Enjoy hands-free showering. Tripod base provides great stability. Pole collapses for washing dishes or hands, and stores in the included nylon bag between uses. Works with the Hot Tap Instant Camp Shower.



#55086 Hot Vent Tent Heater

The safest tent heater ever! Simply place the heater outside the tent and insert the air tubes through the tent door. A small fan connects to any 12V battery, and in just seconds, safe dry hot air flows into your tent. Designed with a sealed heat exchanger, to keep dangerous gas and smelly odors safely outdoors. Includes soft storage case.



#55025 Coleman Propane Stove
 10,000 BTU burners with adjustable cooking power. Aluminized steel cooktop, steel case. Uses one propane cylinder (not included), or operates off bulk cylinders with proper accessories.

#55013 Century Distribution Post

Great accessory! 3-outlet distribution post with Type I (QCCI) Coupling can operate up to 3 propane appliances at once from the same bulk tank. Each outlet is equipped with auto shut-off valves. Mounts to collar of bulk tank.



#55089 Bulk Propane Kit

This kit gives you up to 60 hours of use with either the Hot Vent Tent Heater or Hot Tap Shower. With a powder-coated bracket that attaches to the propane tank collar for convenience. Thumb hand wheel for tightening -- no tools required.



#55057 Deluxe Propane Heater

Connects to bulk tank (not included). Durable ceramic burner for even heating and radiation. On/off control adjusts burner up to 10,000 BTUs. Auto shut-off valve. Steel reflector and safety grid. For outdoor use.





#55003 eXplorist GPS by Magellan

Features mapping capabilities and unlimited storage via optional (not included) secure digital (SD) cards so you can take as many maps with you as you need. High-speed USB data port makes downloading information easy; Geocache Manager software included. With 8 MB of built-in maps and 8 MB of internal memory to save 5 track log files, 20 routes and 500 points of interest. Ready to use -- no service or activation fees. Carry case and power adapter sold separately.

- #55090 Cigarette Lighter Adapter for eXplorist GPS
- #55091 Carry Case for eXplorist GPS



#55045 Bottle-Tote Fanny Pack

High density foam insulation helps keep liquids warm or cold. Breathable mesh back, with 2 zippered pockets. Includes 21 ounce bottles. Assorted colors only.



#55058 Internal Frame Pack

Adjustable padded shoulder straps, sternum strap and hip belt for comfort. Made of durable 420 denier polyurethane coated nylon. Large main top load compartment; lower compartment with front zippered access keeps clothes and other soft goods in place. Numerous zippered and mesh pockets. Measures approximately 26" x 14" x 8".



#55004 eTrex Legend GPS by Garmin

Garmin has loaded a full basemap of North and South America into one small unit. Basemap contains lakes, rivers, cities, interstates, national and state highways, railroads and coastlines. Equipped with 8 MB of additional memory, allowing it to accept downloaded map data (details included with unit). Designed to provide precise GPS positioning using correction data obtained from WAAS (Wide Area Augmentation System). Carry case and power adapter sold separately.

- #55005 Cigarette Lighter Adapter for eTrex Legend GPS (Not pictured.)
- #55006 Carry Case for eTrex Legend GPS (Not pictured.)



#55092 GPSMAP Series GPS by Garmin

Perfect for the serious outdoor enthusiast! This GPS unit incorporates a GPS receiver, barometric altimeter, and an electronic compass that deliver precise location, elevation and bearing information. Contains a basemap of North and South America, including major highways, rivers, lakes, borders and more. With 24 MB of internal memory. Waterproof. Larger screen for improved readability.

- #55093 Carry Case for GPSMAP GPS by Garmin (Not pictured.)
- #55094 Cigarette Lighter Adapter for GPSMAP GPS by Garmin (Not pictured.)

- #55062 "Everest" Back Pack
2 zippered front loading compartments for larger items, lower zippered compartment for smaller items. Padded back and adjustable shoulder straps. Reinforced top carry loop handle. Inside key keeper. Made of durable 600 denier Dacron for strength.



#55047 Survival Whistle

Shrill signal whistle. Includes compass with luminous dial, waterproof match container, signal mirror, flint fire starter. Plastic case with lanyard.



#55096 Lowrance iFINDER® Hunter GPS Plus

Designed for hunters, the waterproof, camouflaged iFinder Hunter is a precision 12-parallel channel, WAAS-enabled GPS that's rugged enough for any location. It has exclusive, hunting-specific icons to mark your treestands, game signs such as rubs and scrapes, the location of your truck or ATV, and actual game animal icons including big game, small game, upland and waterfowl. Scout mapping features and much more. Includes a 12V cigarette lighter power adapter. Operates up to 12 hours on 2 AA batteries, not included. One year manufacturer's warranty.

#51003 Smoothie Maker

Quick and easy smoothies, without the mess of pouring, with a built-in dispenser spout. Stir stick for better mixing efficiency. 500 watts of pulse power.



#51007 Smoothie Recipe Book

Features over 100 recipes. Gives you the tips and nutritional direction to create your own perfect smoothies.

#51026 Set of 4 Acrylic Freezer Mugs

Freezer-style mugs eliminate the need for ice -- keeps drinks icy-cold without the diluting effect of ice cubes! **Set of 4 mugs** (one shown here), each holds 18 ounces.



#51032 Hamilton Beach Blender/Food Processor

48 ounce plastic pitcher. 4 pulse speeds with Ice Breaker speed. Blender Chef attachment with 2-3 cup bowl. Stainless steel processing blade.



#51027 Glass Pitcher & 4 Beverage Glasses

Features a 68 ounce glass pitcher and (4) 15 ounce glass tumblers. Perfect for family dinners, parties and more!

#51005 Stainless Steel Popcorn Maker

Makes theater quality popcorn right at home, using less fat and oil for a healthier snack. Durable stainless steel design. Bottom of pan has aluminum plate clad in stainless steel for exceptional heat dispersion. With a window to watch all the action, a butter drip cup to melt butter right onto the popcorn and long-lasting metal gears. 6 quart capacity.



#51006 Popcorn & Oil Theater Pack

With 4 seasoned packs of popcorn and butter-flavored oil. For use with any stove top popper. Each pack makes 6 quarts of popcorn.



#51038 Programmable Coffee Maker

Up to 10-cup capacity. Removable swing-out cone filter basket. Programmable digital clock and timer, automatic shut-off. Dish-washer safe carafe, nonstick keep-hot plate.

#51175 Euro Style Coffee Grinder

A must-have for those who truly love coffee! Compact design features stainless steel blades and a powerful motor. See-thru lid, internal cord wrap. With a safety on/off button. Great for creating your own flavor blends.



#51067 Dual Mug Coffee Maker

Brews coffee directly into one mug or two. Includes 2 stainless steel travel mugs with rubber grips that fit most standard car cup holders. Auto shut-off after brewing, removable filter liner. Uses #2 paper cone filters; mugs are dishwasher safe.



#51015 Charcoal Smoker & Grill
 Double grill charcoal smoker features a separate base pan design for easy set-up, easy clean-up. Extra-large charcoal pan for longer cooking times. Converts in seconds to a portable or waist-high charcoal grill.

#51185 Electric Meat Grinder

Powerful 375 watt (1/2 HP) motor and stainless steel housing. Reset fuse for overload protection. Reverse switch helps eliminate jamming. Steel junction parts and feeder tray; all-metal feed screw; die-cast metal head. Food plunger included.



#51173 Wireless Meat/BBQ Thermometer

Digital LED screen with remote wireless probe to identify temperature of meat. Preprogrammed entree' settings (beef, chicken, hamburgers and more) and doneness selections.

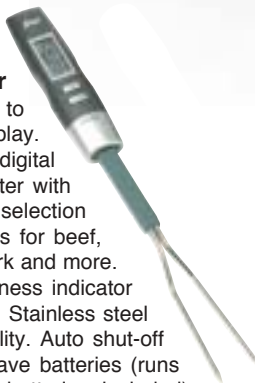
Detachable belt clip and table stand.

Transmits up to 100 feet away.



#51183 BBQ Fork Thermometer

Jumbo, easy to read LED display. Precision digital thermometer with various selection readings for beef, chicken, pork and more. Doneness indicator selections. Stainless steel fork for durability. Auto shut-off feature to save batteries (runs on 2 AAA batteries, included).



#51004 Apple/Potato Peeler

Cores, peels and slices. Made of enamel-coated cast-iron with stainless steel blades. 5 year manufacturer's guarantee.

#51206 Steel & Silicone Brush & Baste Set

Great for BBQ sauces and marinades. Silicone bristles are heat resistant to 600 degrees and will not shed or lose their shape. Easier to clean than paintbrush-type brushes.

2 cup capacity basting cup. Brush handle and basting cup are stainless steel. Both pieces are top rack dishwasher safe.



#51181 Anchor Hocking Baking Set with Baskets

Includes a 3 quart baking dish; 2 quart casserole dish with glass lid; 8" square cake pan; all with rattan seagrass baskets with carry handles.



#51163 Pyrex 1 Quart Measuring Cup

Perfect for many different kitchen needs, from measuring to mixing to storing. Pyrex cups are safe to use in the oven, microwave, refrigerator and freezer, and are dishwasher safe. Handy lid protects contents and provides pouring options.



#51179 Anchor Hocking Bakeware Set

Includes a 3 quart baking dish with plastic lid; mixing bowls (1 quart, 1-1/2 quart and 2-1/2 quart, none pictured) with plastic lids; 2 quart casserole dish with glass cover and plastic lid, and an 8" square baking dish with plastic lid.



#51178 Anchor Hocking 3-Quart Bake N Take

Sculpted 3-quart baking dish with plastic lid and blue carrying tote. Perfect for potlucks and family dinners.



#51180 Anchor Hocking Sculpted Bakeware Set

Includes 3 quart baking dish with plastic lid; 2 quart casserole dish with glass cover; 8" square cake pan with plastic lid; and (4) 6 ounce custard cups with matching plastic lids.



#51111 Ice Cream and Frozen Yogurt Maker
 Makes ice cream, frozen yogurt, gelato, sorbet and more. Fully automatic -- no stirring, ice or salt needed. Carrying handle easily locks transparent lid in place. Recipes included.

#51168 DrinkMaster Drink Mixer
 Classic soda fountain design is great for mixing all kinds of drinks, shakes, malts and more. Includes a 28 ounce stainless steel mixing cup and easy to clean detachable spindle. Two speeds with tiltable mixing head.



#51186 Mirro Nonstick Cookware Set
 Well-designed with 2 to 2-1/2mm of aluminum. Nonstick interiors and exteriors for easy cleaning. Soft grip, stay cool handles. Glass covers to easily view food. 20 year limited manufacturer's warranty.



#51207 Egg & Muffin Toaster
 Now you can make your favorite drive-thru breakfast sandwich without the drive-thru, in about 4 minutes! This appliance can simultaneously toast the bread, cook an egg (poached or steam-scrambled) and warm a pre-cooked slice of meat, or any combination of these three functions. It can also boil up to 4 eggs. Accommodates bagels, croissants or English muffins; automatic shut-off modes for toasting and poaching. With an "Egg/Toast" function that directs cooking of both items to complete at the same time.



#51153 12" x 16" Cutting Board
#51152 9" x 12" Cutting Board



Simply beautiful hardwood cutting boards. Butcher block style, with juice-groove.



#51208 Food Steamer
 Steaming is the healthiest way to prepare a variety of foods. From vegetables, rice, seafood and meats, this food steamer does it all. Equipped with a digital timer, LCD display and exterior water level indicator, so food will be steamed just right every time. 10 quart capacity. Drip tray collects liquid for making gravies and sauces.



#51166 Baker's Secret Precisionware Baking Set
 Premium bakeware that combines the performance of commercial weight steel with professional pan markings -- cookie targets, portion guides, and more. Includes a medium cookie pan, square cake pan, oblong cake pan, 12 cup muffin tin and large loaf pan.



#51151 FireStone Knife Sharpener
 First stage sharpens to a hollow ground edge, second stage hones blade to highest degree of sharpness. Made with fired ceramic stones for superior sharpening.

#51165 16 Bottle Wine Cooler
 Space saving design. Sturdy, coated slide-out shelves, front leveling legs. CFC free with adjustable thermostat. Amber tinted tempered glass door.





#51035 Slow Cooker
Removable, stain proof oval stoneware crockery. Portable lid latch strap and handle, with tempered glass lid. Wrap around even heat.

#51034 Hamilton Beach HealthSmart Indoor Grill
Nonstick grid system with 38 sq. inch grilling surface. Dishwasher safe drip tray, cool touch handle. Includes recipe book and scraper/spatula. Approx. 8" x 10".



#51040 Iced Tea Maker
Fresh brewed taste in under 10 minutes. Brew strength selector, permanent tea filter. Uses tea bags or loose tea. Auto shutoff and indicator light. Slim design pitcher fits inside most refrigerator doors.



#51140 Battery-Powered Marshmallow Spinner
Perfect for homemade s'mores! With revolving prongs to evenly cook 3 marshmallows at once. Stainless steel construction; heat shield handle. Runs on 4 AA batteries (not included).

#51141 Automatic Hot Dog Grill Roller
Grill-top roller for rich, full flavor without tedious hand-turning. Rotates up to 6 hot dogs or sausages for even cooking. Stainless steel construction, fits most charcoal or gas grills. Disassembles for easy cleaning. Runs on batteries, not included.



#51046 Lodge Fajita Kit
Includes a 7" x 10" oval cast iron griddle, 1/2" thick routed wooden underliner to fit griddles, hot mitt handle holder and recipes.



#51049 18 Quart Roaster Oven
Large 18 quart capacity is ideal for large family gatherings. Roasts up to a 22 pound turkey. It roasts, bakes, cooks, steams, slow cooks and serves. Cook well removes for easy cleaning. Automatic temperate control ranging from 200 to 450 degrees.



#51143 Reed & Barton Optima Flatware Set
Beautiful, bright finish crafted in worry-free 18/10 stainless steel. 5 piece setting (salad fork, dinner fork, knife, soup spoon, teaspoon) for 12, plus a 5 piece hostess set. Dishwasher safe with 25 year manufacturer's warranty.



#51048 Express Food Dehydrator
Features a top mounted fan and 500 watts of drying power to generate maximum speed and quality for dehydrating fruits, vegetables and jerky. Helps food dry in hours, not days like ordinary dehydrators. Packed with 4 trays. Adjustable thermostat allows for best drying results.

#51039 4-Slice Belgian Waffle Maker
Belgian-style square grid makes 4 waffles at once. Power and preheat lights; nonstick easy to clean grid and mess-proof covered hinge. Compact, upright storage.



#51061 3-Piece Stainless Steel Bowl Set

Perfect for storing leftovers and other uses. 3 sizes: 1-1/2 quart, 3 quart and 5 quart, with durable, translucent lids for easy stacking.



#51051 Nesco Food Slicer

Heavy-duty cast aluminum housing with unique tilted slicing surface for ease of use. Stainless steel cutting blade for precise cuts. Dual switch safety feature, safety hand guard to safely move food where you want it. Acrylic food tray fits below housing to collect food as it is sliced. Disassembles easily with removable dishwasher safe parts.



#51052 WearEver® Nonstick Cookware Set

Constructed of 2-1/2 to 3mm aluminum with metal safe nonstick interior. Durable porcelain exterior resists chipping and scratching. Riveted soft grip, stay cool handles; steam venting stainless steel covers. Limited lifetime manufacturer's warranty.

#51050 Mini Deep Fryer

3-cup size is ideal for small families or individual servings. Cool touch exterior. Temperature control with 3 settings for all types of food. Oil reservoir has durable, nonstick coating for easy cleanup. Removable, dishwasher safe basket and lid. Indicator light shuts off when oil reaches desired temperature.



#51060 Ceramic Pizza Stone

Ceramic stoneware for superior, even baking. Measures 15" in diameter, includes chrome serving rack.



#51172 Indoor Grill/Griddle with Removable Grids

60 square inches of grilling surface opens up to 120 sq. inch double grill/griddle for larger meals. Removable, dishwasher safe grids and drip tray make for easier clean up. Grid system drains grease away from food. With auto shut-off timer. Compact, upright storage design to take up just a small space in your kitchen.



#51062 Corkscrew

7" chrome corkscrew, heavy duty with special wing tips, makes any wine bottle easy to open.



#51065 PUR Faucet Water Filter

Faucet mounted with filter life indicator. Includes swivel sprayer attachment and one filter good for 2-3 months of usage.



#51063 8 Quart Multi Cooker (Pasta Pot)

18/8 Stainless steel. Includes 8 quart colander insert, removable steamer basket, stockpot base and glass lid with vent hole. Great for cooking soups, pastas, and steaming seafood or vegetables.



#51064 Kitchen Scale

Plastic, adjustable scale. Measure dry goods or liquids in grams, ounces or pounds, up to 5 pounds. Bowl has convenient pour spout and handle.





#51068 Quesadilla Maker
 Bake your favorite quesadilla recipes right at home in about 5 minutes! On/off indicator and ready light. Nonstick drip tray and cooking plates, steam guard. Owner's manual includes recipe ideas.

#51073 Breadman Breadmaker
 Makes 2 pounds of bread in under an hour. With 8 breadmaking programs, 13 hour delay, crust control, keep warm cycle and viewing window. Recipe book and bread mix included.



#51069 Electric Carving Knife
 Stainless steel serrated blades with comfort grip handle makes for easy use. Thumb tip control button and blade release button.

#51070 Tall Can Opener/Knife Sharpener
 Handles large cans with ease. Hands free operation. Easy piercing action and removable cutting assembly. Magnetic lid holder and built in knife sharpener. Hidden cord storage.



#51076 High Performance Stand Mixer
 High performance 400 watt motor with professional 2 way rotating action. All metal construction with 12 settings, tilt up head and locking bowl and 2 piece pouring shield. Includes a flat beater, dough hook and wire whisk attachments. Your choice of Licorice Black, Moroccan Red or Pineapple Yellow.

#51075 Hand Mixer
 Includes 3 beater sets: dough hooks, basic and heavy duty beaters, plus spatula attachment and convenient storage caddy. 200 watts with burst of power.



#51077 Hand Blender
 Blends, mixes, chops, purees. Ergonomic fingertip control, two speeds, with stainless steel blade.



#51072 Electric Griddle
 Nonstick cooking surface measures approx. 22" x 12", with full perimeter channel, grease cup and adjustable temperature control.



#51074 Toaster Oven
 Cool wall sides. With dishwasher safe removable liner. Curved glass door to fit up to 9 inch pie pans. With bake, broil, toast and bagel functions. Two-hour timer and LED power indicator, automatic safety shut-off. Full range thermostat. Includes wire rack, broil insert and bake pan.



#51171 Nonstick Electric Skillet
 12" x 12" electric skillet has cool touch handles and is dishwasher safe. Nonstick cooking surface, adjustable heat dial. Dome shaped lid with steam vent.





#51112 Salt and Pepper Mill Set
Pepper mill features adjustable settings from extra fine to coarse. Zinc alloy grinding mechanism, ideal for durability and strength, is chrome plated to help prevent corrosion. Approx. 6-1/4" tall in wood and acrylic for easy viewing. With manufacturer's limited lifetime warranty.



#51213 Stainless Steel Cutlery Set
From Chicago Cutlery. Eight-piece set features a 3" parer, 3-1/2" parer, 5" utility, 7-1/2" bread, 7-1/2" chef, 7-1/2" slicer, and 8" sharpening steel. Includes wood block for storage.

#51212 Chef's Choice® Electric Knife Sharpener

Sharpens in just seconds! Creates super sharpness and durability in fine (straight) edge and serrated knives. High precision angle guides eliminate guesswork.



#51102 Steakhouse Style Knife Set

Triple riveted rosewood handles and stainless steel blades. Oversized steakhouse design. In giftbox.



#51117 Vacuum Packaging System

Semi-automatic vacuum and sealing, with hose port for canisters, bottles and jars. Includes vacuum unit and 5 pre-cut bags that are microwave, freezer, boil-in-bag and dishwasher safe.

#51211 Extra Roll - Vacuum Packaging Bag Material

#51078 Toastmaster Toaster

4 slice toaster with dual controls, cool touch exterior. In White with chrome accents.



#51081 Microwave Oven

1200 watt with one touch sensor cooking (6 categories) and one touch sensor reheat. Turbo defrost, keep warm feature. 1.1 cubic foot capacity.



#51087 Cool-Touch Deep Fryer

Removable, dishwasher safe nonstick pot. 8 cup capacity. Cooking timer with auto shut-off. Cool-touch exterior, covered for splatter-free frying. Adjustable heat. Breakaway cord helps prevent fryer from tipping over if cord gets snagged. Viewing window.



#51091 "Work" Bottle Thermos

Rubberized handle with oversized metal links. Stainless steel drinking cup fits virtually any cup holder. Bottle holds 1-1/4 quarts (25% more capacity than similar quart bottles). Approx. 14" high.



#51123 JarVac Vacuum Packaging System

Reseal and vacuum pack using original glass jar or container lid to seal in freshness and flavor. Place jar under vacuum dome for a fresh seal. Vacuum seal mason jars, baby food jars, marinate food in minutes and more. Includes 3 universal lids (4", 7" and 10") and 1 Bottle Saver (great for soda or wine bottles.) Accessories store inside. Not intended for long-term preservation.

#51088 George Foreman Jr. Rotisserie Oven

Great for poultry, fish, burgers and more! Holds up to a 10 lb. turkey. Easy to use spit assembly. 3-hour countdown cooking timer. Includes adjustable flat basket and exclusive round basket for air baked fries and veggies. Roll-top door for easy access, large viewing window. Slide out drip tray captures run off fat for healthier cooking.



#51096 Beechwood Lazy Susan
Easy revolving beechwood lazy susan, measures approx. 14" in diameter.



#51097 Beechwood Napkin Holder

Great table top item, holds napkins and a set of (included) ceramic salt and pepper shakers. Measures approx. 4" x 7" x 7".



#51098 Beechwood Paper Towel Holder
Upright paper towel holder in beechwood for counter top use. Measures approx. 13" x 7" x 7".



#51095 Beechwood Coaster Set
Set of 6 beechwood coasters with wrought iron pegged stand. Coasters approx. 4" round.

#51100 Kitchen Knife Block Set

15 piece knife set by Chicago Cutlery includes 6 steak knives; parer knife, vegetable slicer, utility knife, boning knife, bread knife, slicer and chef knives, kitchen shears and wood storage block.



#51101 Pyrex Food Storage Set

10 piece set includes 5 Pyrex containers with matching plastic lids. With 3-1/2 cup rectangular dish, 6 cup rectangular dish, 4 cup round bowl, and (2) 2-cup round bowls.



#51103 Revere® Ware 13-Piece Cookware Set
Superior quality stainless steel cookware with copper encapsulated bottoms and glass lids. Set includes these 6 pans, all with matching glass lids: 1-1/2 quart, 2 quart and 3 quart saucepans; 8 quart stockpot, 10" nonstick fry pan, 3 quart casserole; plus 3 quart steamer insert with side handles.

#51104 Corningware® Casserole Set

8 piece casserole set features Corningware dishes in these sizes: 1-1/2 quart round, 1-1/2 quart oval, 2-1/2 quart round and 2-1/2 quart oval, all with lids.



#51106 Corelle Impressions® Dinnerware Set

18-piece set includes 4 each: 10-1/4" dinner plates, 7" salad/dessert plates, 18 ounce soup/cereal bowls, 9 ounce mugs. Also includes a 1 quart serving bowl and a 12-1/4" oval serving platter. In White.



#51158 Baker's Secret Bakeware Set

Includes 2 9" pie plates, 2 8" round cake pans, 2 loaf pans, 2 cookie sheets, 1 each: brownie pan, 6 cup muffin tin, oblong cake pan and 12-1/4" round pizza pan.





#51021 Chrome Double-Sided Lighted Makeup Mirror

Rotates 360 degrees with 1x and 7x magnifying sides. Lighted settings in low, medium or high. Polished chrome finish, fog-free viewing. With 6 foot power cord.

#51018 Chrome Haircut Kit
 Perfect for the home barber or stylist! Includes 9 attachment combs and 5-detent taper that provide 50 precision settings. With barber comb and scissors, cleaning brush, blade guard, clipper oil, cape and more. Diamond-sharpened carbon steel blades.



#51022 Thermal Spa Bath Mat

Quiet, powerful AC universal motor produces heated bubbles to help maintain warmth of bath water. 3-position rotary switch (off, low air heat, high air heat) controls 300 individual aeration vents. Folding air mat, 9' flexible air hose. One year manufacturer's limited warranty.



#51182 Sonicare Electric Toothbrush

Gently cleans with next generation sonic technology. Cleans even hard to reach areas with included Elite Series handle with one brush head, charger base and deluxe travel case. SmarTimer and 30 second Quadpacer interval timer. Dual color recharge indicator.



#51008 Manicure Set

Genuine leather zippered case includes: nail clipper, toenail clipper, tweezers, nail cleaner, cuticle trimmer, file and cuticle scissors. Convenient carrying case.

#51130 Conair Heated Lotion Dispenser

Works with your favorite hand and body lotions. Reservoir is removable and dishwasher safe. Heats up in just 2 minutes, with variable temperature control. Auto shut-off feature.



#51089 Large Analog Dial Bath Scale

White scale with black, no-slip vinyl mat. Durable steel base, 330 lb. weight capacity. Easy-to-read dial.



#51129 Conair Curling Iron Set

Includes all the attachments needed for various hairstyles. Barrel spiral iron, barrel curling iron, straightening/creasing attachment with interchangeable plates; cool tip. 6 foot professional length cord.



#51127 Ladies' Massaging Slippers

#51128 Men's Massaging Slippers

Super comfortable suede, plush-lined slippers. Microwaveable gel packs provide heat. On/off button on slippers' sides. One size fits all, in ladies' and men's styles. Needs 4 AAA batteries, not included.



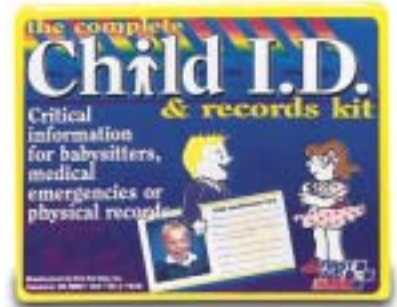
#51020 Ion Shine Ceramic Turbo Hair Dryer

Full-size hair dryer with 1875 watts of power. Ceramic dual heat technology. Ionic device for manageability and shine. Xtreme turbo setting for fast drying. With 16 styling settings, cool shot button, hang loop and folding handle for more compact storage.

#51134 Softside All Purpose First Aid Kit
 Indispensable kit -- portable!
 Includes first aid guide, vinyl gloves, antiseptics, ointments and an ample supply of gauzes and bandages.



#51132 Child I.D. & Records Kit
 Helps you record critical information for caretakers and emergencies. Fingerprint, personal information, physical attributes and emergency contact cards are included. Instruction guide included. Case measures 4-1/2" x 3-1/2".



#51136 Braun Digital Ear Thermometer
 Measures temperature in one second -- "beep" confirms end of measurement. Unique lens filter detection, lens filter ejector, LCD display light. Brand most used by pediatricians.



#51131 Hardside All-Purpose First Aid Kit
 Extra large, wall-mountable kit. Includes first aid guide, vinyl gloves, thermometer, antiseptics, ointments, OTC pain medication and a wide assortment of bandages, pads and gauze.

#51177 Upper Arm Blood Pressure Monitor
 Reliably measures both the height and width of your pulse with patented technology. 3-color light system for easy understanding of readings. Large display and clear figures show systolic/diastolic blood pressure and pulse rate. Batteries included. Up to 42 memory stores, 21 x 2 persons. One touch auto inflate, small light design. Extra wide cuff for larger arm widths.



#51133 Pet First Aid Kit
 For your "other" special family members! 35 piece kit includes all the special items your pets may need in the event of an accident. Contains bandages, wound care items, antiseptic, bandages, first aid tape, a 6' leash and more. Includes a pet first aid guide.



#51162 Smoke & Carbon Monoxide Detector
 2-in-1 alarm detects 2 deadly threats. Test/silence button, blinking power indicator and low battery light. Loud 85-decibel alarm. Great for bedrooms.



#51161 Smoke Alarm w/ Escape Light
 Super bright beam to light your way, 85-decibel alarm and remote flashlight test. Includes 2 9-V batteries.



#51149 Flex Hand Working Gloves
 Durable grain cowhide leather. Heavy spandex back for snug fit. Multi-purpose use and versatility. Natural wing thumb design. Shirred elastic back. Specify Size M, L or XL.



#51156 Push-Button Key Safe
 Convenient and secure spare key storage. Great for when the kids come home from school or when you misplace your keys. Installs in minutes with just 4 wood screws. KeySafe opens using a numeric combination that you choose and set yourself; change combination as often as you wish for added security. Interlocking faceplate prevents tampering and unauthorized access.



#51150 American Flag Safety Hardhat by Jackson
 Protection with personality! Fully dielectric, non-slotted safety cap. Fully reflective from all angles for protection in low light situations. Ratchet headgear with replaceable sweatband and adjustable suspension. Meets ANSI Z89.1, Type 1, Class E Standards.



#51154 USA Flag Kit with Pole
Includes a sectional, lightweight aluminum 15' flagpole, 2" in diameter, and a 3' x 5' USA flag. Weatherproof cast aluminum flagpole cap with nylon pulley system. With 2 nylon flag clips, flag etiquette guide and more.

#51167 Texas Hold 'Em Poker Chip Set
All you need for a great night of poker right at home! Includes 300 professional size chips; 2 decks of playing cards, all held in a briefcase style case with felt lined interior.



#51174 Illuminated Rock Garden Fountain
Create a peaceful environment with the soothing sounds of cascading water. Special effects lighting, variable water flow speeds let you select the pace that meets your mood. With genuine polished river rocks, fountain measures 10-1/2" around by 8" high.



#51144 Talking Pedometer
Makes walking and jogging more fun! Includes step and distance announcements, talking clock and 4 alarm sounds. Plays 7 different melodies. Clips to waist band. Approx. 2" x 2" x 1".

#51043 Gift Candle in French Vanilla
#51044 Gift Candle in Cinnamon Stick
#51045 Gift Candle in Clean Linen
18 ounce long-burning, heavily scented candle in potpourri bubble top jar. Available in French Vanilla, Cinnamon Stick or Clean Linen.



#51083 Maglite 4 D-Cell Flashlight
High intensity light beam from spot to flood. Anodized inside and out for corrosion resistance. Water/shock resistant. Black. Batteries not included. Bigger size for work related uses.



#51084 Maglite 2 D-Cell Flashlight
High intensity light beam from spot to flood. Anodized inside and out for corrosion resistance. Water/shock resistant. Black. Batteries not included.



#51148 Radio Controlled 12-1/2" Wood Clock
Radio controlled to automatically set to exact time, and self-adjusts six times daily to exact time. With Daylight Saving Time feature (can be disabled). Alkaline battery (not included); press time zone and wait for signal. In Natural wood finish.

#51147 Wireless Temperature Station
Wireless technology monitors outdoor and indoor temperatures. Wall hanging or free standing (detachable stand included); with digital clock, wireless sensor and receiver with transmission range of up to 80 feet. Temperature accuracy with 1-1/2 degrees F.



#51146 Wireless Rain Gauge
Receives rain data from remote rain gauge. Stores history of rainfall for past one hour, 24 hours, and last rainfall period. View last 7 days, weeks or months on graph. Rain alarm function (notifies of rain); wall hanging or free standing. Rainfall transmitter self-empties via tipping bucket. Manual set time and date.



#51066 Confetti Cut Paper Shredder
Accepts up to 7 sheets at a time. Includes a 4-1/2 gallon mesh basket. With auto-start, confetti cut pieces, 9" paper entry width.

#51145 Wireless Weather Station
Radio controlled time and date. Features include measurement of both indoor and outdoor temperature and humidity; minimum and maximum temperature recordings; wind speed and gust measurement; windchill, dewpoint, current moon phase and more. LED backlight and remote sensors.





#51138 Ladies' Leather Checkbook Clutch

Top grain velvet cowhide, in Black or Chocolate Brown. Please specify.



#51139 Men's Tri-Fold Leather Wallet

Soft milled nappa cowhide in Black or Brown. Please specify.

#51019 Roller Massager Cushion

Full massaging seat with shiatsu roller massager in center panel. Auto shut off after 20 minutes. Powerful vibration motor on soft cushion seat. Two adjustable seat straps secure to most chairs. On/off vibration and massage settings, on/off power switch with extra long power cord.



#51126 Professional Percussion Massager

Deep muscle massager with infrared heat is lightweight for easy use. Cushioned pivoting heads with variable speed thumping action. Soft handle, extra long power cord.



#51205 Leather Lunch Sack/ Handbag

Popular ladies' mini tote is great for carrying lunch or for use as a purse. Includes two zippered pockets for keys, cash and change. Extra long straps make it comfortable to carry over the shoulder. Fully lined in 600 denier nylon for added protection against spills and tears. Tote measures approx. 8" x 11" x 4". In Black or Brown. Please specify.

#51001 Leather Mini Tote

Ladies' mini tote/purse includes two zippered pockets for keys, cash and change. Extra long strap makes it comfortable to carry over the shoulder, or remove and use carry handles. Overall size is 9" x 6" x 7". In Black or Brown. Please specify.



#51002 American Tourister Carry-on

26" upright features push button locking handle and inline skate wheels. Multiple pockets, removable add-a-bag strap to attach smaller bags. Interior straps keep contents from shifting; self-mending zippers for easy closure. Molded carry handles for comfortable transport. In Black. Measures 26" x 19" x 9".

#51079 Samsonite 4-Piece Luggage Set

Nested set includes 20" and 30" upright with extension handles; duffel bag with removable shoulder strap, and tote with smart sleeve that attaches to any upright handle. Black 600 denier poly/ramie with contrasting trim.



#51209 Pet Porter - Medium

Portable pet kennel for animals up to 30 lbs. Measures 27" x 20" x 19".



#51155 Pet Taxi

Portable pet kennel for animals up to 15 lbs. Recommended for cats, toy poodles or other toy breeds. Measures approx. 22" x 14" x 11".



#51092 Travel Tote

Helps bring the comforts of home on the road. Interior mesh pockets for organization, separate, zippered wet pocket. Convenient hanging feature, and top handle for easy carrying.





#51160 Bissell Steam Mop
Bare floor steam cleaner, safe for all bare floors. Chemical free cleaning. Swivel head for tight spaces. Steam on demand is ready to go in just 30 seconds.



#51142 Hoover Bagged WindTunnel Canister Vacuum
15 inch cleaning path with dual edge groomers for superior cleaning. Allergen filtration system. Fingertip on/off switch for use on hard surfaces. Onboard covered tool storage for a variety of attachments, including wands, crevice tool, dusting brush and more. Powered hand tool for stairs and powered rug/floor nozzle.



#51041 Hoover Bagged WindTunnel Upright Vacuum
Covered upfront tool storage for convenience. Edge groomers to remove dirt near baseboards and furniture. 15 inch cleaning path. Dual brush agitators. Tools include extension wands, dusting brush, crevice tool and more. Cord is 31 feet for large area vacuuming. Allergen filtration.



#51159 Bissell Little Green ProHeat Compact Cleaner
Powerful strong spray and suction cleans and helps dry in one step. Built in heater keeps water hot for optimal cleaning. Long power cord. Compact design. Easy to fill and empty tanks for both clean and dirty water. Perfect for those messes that are just a little too big for a spot lifter.



#51009 Bissell Cordless Spot Lifter
Lifts and removes tough spots and spills. Cordless, rechargeable. Adjustable spray nozzle. Easy to empty, see-thru tanks. Stores easily. 1 year manufacturer's warranty.



#51010 Bissell Pro Heat Steam Vac
Upright deep cleaner with rotating DirtLifter® powerbrushes that lift out deep down dirt and gently groom carpet. On board tools and Tank-in-Tank, holding both dirty and clean water. Built in heater.



#51210 Hand-Held Fabric Steamer
Continuous steam function, activated by trigger switch. 1000 watts for superior steam performance. Soleplate for conventional steam ironing with variable temperature control. Fabric, lint brush attachments.



#51157 Cordless Glue Gun with Base
Can be used corded or cordless for convenience. Includes charging stand. 60 watts, with insulated nozzle. Uses standard .44" diameter glue sticks. High temperature for hard materials like wood, metal or plastic.



#51164 Tower Fan with Remote
Quiet action remote controlled fan fits discreetly into any room and circulates the air. Remote has mobile settings and a timer.

#51137 Singer Full Size Free-Arm Sewing Machine
Easy to use, designed for all general sewing needs. With 25 stitch functions and 3 needle positions. All purpose presser foot, front load bobbin, push button reverse, 4-step buttonhole. Accessory storage.



#51170 Full Size Steam Iron with Steamer
PressFree® steaming option for quick wrinkle removal without an ironing board. Nonstick soleplate. Automatic shut-off feature. Pivoting cord for easy use.



Regulator Clocks: Handcrafted from solid hardwoods with hand rubbed finish. In traditional oak, these clocks feature a precision quartz movement and full color artwork by various artists. Runs on 1 AA battery, not included. Measures 12" wide x 24" high x 4" deep. Your choice of one of the following 9 designs:



#51202 Birdhouse



#51189 Chickadees



#51203 Deer



#51204 Loons



#51199 Elk



#51200 Flying Ducks



#51198 Horse



#51201 Pheasants



#51197 Soaring Eagle



#51194 Framed Collector's Plates
by Rosemary Millette
Beautiful and ready for hanging!
Includes 4 plates,
9-1/4" diameter each, in the
following designs:
Spring - Goldfinches;
Summer - Hummingbird;
Autumn - Chickadees; and
Winter - Cardinals. Frame is
solid oak in light stain, and holds
4 plates securely under glass.
Display vertically (as shown
here) or horizontally. Frame
size is approx. 43" x 13".

**#51124 "Best Friends"
Cameo Collection**
by Terry Redlin

Elegantly framed "Best Friends" by
Terry Redlin, with cameo inset. Framed
in 2" classic mahogany or walnut
moulding. Double matted with suede
outer mat. Measures 19" x 26".



**#51125 "Morning Solitude"
Cameo Collection**
by Terry Redlin

Elegantly framed "Morning Solitude" by
Terry Redlin, with cameo inset. Framed
in 2" classic mahogany or walnut
moulding. Double matted with suede
outer mat. Measures 19" x 26".



Gorgeous art prints and plates by various artists. All beautifully framed and ready for your home.



#51193 "Autumn Reflections - Whitetail Deer"
by Rosemary Millette
approx. framed size 25" x 32-2/4"



#51187 "Morning Retreat"
by Anthony Padgett
approx. framed size 23" x 36"



#51190 "Pheasant Country"
by Jim Killen
approx. framed size 26" x 32"



#51192 "Vineyard - Mourning Doves"
by Rosemary Millette
approx. framed size 31" x 20"



#51188 "Rebuilding America"
by Persis Weirs
approx. framed size 29" x 33"



#51195 "Taste of Spring"
by Persis Weirs
Collector's Plate and Frame
Beautiful porcelain collector plate, 9-1/4" diameter. Frame is solid oak in light stain, and holds plate securely under glass. Octagon frame size is approx. 13" x 13".



#51196 "Great Hunting Dogs II"
by Jim Killen
Collector's Plate and Frame
Beautiful porcelain collector plate, 9-1/4" diameter. Frame is solid oak in light stain, and holds plate securely under glass. Octagon frame size is approx. 13" x 13".



#51191 "Going Camo"
by Brett Longley
Dalmatian puppy print and frame measure 21-1/2" x 26-1/2". Multi-colored balls in the print can be personalized with your child's name, if specified on your order form.



#56001 Black & Decker 1-3/4 Peak HP Plunge Router

Plunge action for versatility, Sightline® base for improved visibility and control. Large, stable base for stability. Dust extraction port for cleaner working environment. Trigger switch with lock-on button, easy setting depth scale for accuracy. Contoured chip shield helps keep debris from flying.



#56002 Skil 14.4V Cordless Drill

Cordless drill plus hammer action. For drilling pilot holes, driving masonry anchors and more. Two speed ranges: high speed (0-1400 RPM) and high torque (0-350 RPM). With 3/8" ratchet action keyless chuck. Variable speed trigger with reverse. Includes 2 rechargeable batteries, charger base and carry case.



#56003 Skil Classic Circular Saw

7-1/4" saw with 2-1/2HP. 12 AMP. Ball bearing construction with die cast aluminum blade guard. Locking off switch, rear depth adjustment. Includes carbide tooth blade, combo blade wrench and rip fence.



#56004 Makita Palm Sander

1.6 AMP, all ball bearing construction. Clamp lever for sandpaper installation. Dust bag included.



#56005 Skil Belt Sander

3/4 HP, 700 FPM. Sanding area of 3" x 5.5", belt size is 3" x 18". Removable dust bag.



#56006 Protec 6" Bench Grinder

120V, 60Hz, 3.5 AMP, induction type ball bearing motor with 3500 RPM. Safety eye shields, dust ejectors, medium and coarse grinding wheels. Adjustable work lamp included.

#56007 Makita Disk Grinder
5.0 AMP, M10 x 1-1/4 spindle thread. All ball and needle bearings for long life. Double insulated, with overload protector.



#56008 10" Drill Press

Table tilts from 0-45 degrees. Built-in adjustable worklight. 5-speed, 1/2 HP motor. Quick belt tension release for easy speed changes. Switch with removable safety lock pin. 1/2" chuck with key.

#56010 Sliding Compound Miter Saw with Laser Guide

10" sliding compound miter saw with laser guide features a powerful 15 AMP motor, operating at 5,000 RPM. With blade brake, arbor lock for fast changes, 12-3/4" diameter cutting table with positive stops at various degree-graduations. 19-3/4" table with 9" deep legs. Automatically retractable, heavy-duty clear plastic blade guard. Laser guide gives a 1/8" wide beam to project your blade path. Includes a 30-tooth carbide tipped saw blade, adjustable work clamp and sawdust collection bag.



#56012 Pressure Washer

For car, boat, windows, patios and more. 1300 PSI, 1.6 GPM. Heavy duty 2 HP motor with GFCI protection for safety. Adjustable nozzle and extension, 19 foot hose, foaming lance. Spray gun with trigger release and auto shut-off.



#56013 Mulching Leaf Blower / Vacuum

Powerful 31cc blower/vacuum for fast, easy outdoor cleanup. Vacuum automatically mulches debris at a 10:1 ratio, reducing yard waste. Large vacuum tube for fewer clogs. Quick tool-free vac conversion. Variable throttle, anti-vibration handle. Ergonomic bag design gives greater freedom of movement.

#56011 8-Gallon Shop Vac

Quiet 2 HP wet/dry vacuum with 6-foot hose and extension nozzle, extension wands, combination nozzle, 10" squeegee insert. With reusable dry filter, and 4 snap-on wheel casters.



#56015 Fast Charge Battery Charger

10/30/50 for 12V batteries. 10 AMP charges in 3-5 hours. With 30 AMP fast charge and 50 AMP engine start.



#56021 Stanley 25' Tape Measure

Coated tape measure blade with high contrast for easy readability.

#56016 Waterloo 6-Drawer Tool Chest

Reinforced side wall construction, external lock bars. Measures approx. 26"W x 12"D x 15"H.



#56017 Waterloo 3-Drawer Rolling Tool Cabinet

Reinforced side wall construction, external locking bar. 4" x 2" casters (two swivel with brake, two fixed). Measures approx. 26"W x 18"D x 32"H.



#56014 Gas Powered Grass Trimmer

2-cycle, 28cc engine. With EZ Pull® System and Bump Head® Line Release. 15" cutting swath. Ergonomic curved handle for comfortable use. One year limited manufacturer's warranty.

#56019 Wolfcraft 6" Bar Clamp

1-handed power clamp and spreader. Protective polymer clamp pads, easily repositioned with one hand. Longer arm travel, reversing lever. Spreading capacity of 8 to 14 inches.



#56023 Quartz Halogen Work Light

Weather resistant housing, tempered glass and wire guard shields the 500-watt quartz halogen bulb. Adjustment knob to change vertical tilt of light. Sits flat.



#56024 2-1/4 Ton Floor Jack

Low profile allows fit under even the lowest vehicles. Swivels for easy positioning, conforms to ANSI/ASME safety standards. Wide wheel base, precision hydraulics for steady lift and lowering. Includes carrying case.



#56025 Buffer / Polisher

10" random orbit polisher for fast, efficient and more consistent results than working by hand. Polishing head oscillates instead of spinning, reducing the chance of leaving burns, streaks or swirl marks. Heavy duty 6' cord, large 10" tapered foam pad, on/off switch.



#56028 3-Ton Jack Stand

With ratchet-type locking mechanism. All joints fully welded for added strength. Enamel coated, solid steel locking handle, with 1-year manufacturer's limited warranty. Meets ANSI standards. Offered in set of 2. (Only 1 pictured.)



#56032 Makita 18V Cordless Drill

Power and efficiency in a compact size. All metal gear transmission, exclusive Shift Lock Drive® for one-touch, quick shifting from drill to driver. Ni-MH batteries for greater capacity, longer run time and no memory effect. Locking/ratcheting chuck, variable speed trigger and rubberized grip. Includes 2 batteries, charger and case.

#56033 Pneumatic Brad Nailer

18 gauge. Use for trim work, interior molding, baseboards, paneling and cabinet assembly & installation. With rubber comfort grip, top exhaust, sequential trigger and easy side load magazine. 1-year manufacturer's warranty.



#56036 Retractable Air Hose Reel

Heavy duty industrial strength construction. Fully retractable hose included, 3/8" x 25'. With locking ratchet brake, auto rewind. Reel can be mounted vertically or horizontally. Valve assembly handles up to 250 PSI and 25 CFM.



#56044 Saw Horse Set

All steel, with folding legs. Self-stabilizing, no assembly required. Can add 2 x 4 for sawing safety. Offered in set of 2. (Only 1 pictured.)

#56040 Wagner Wide Shot Paint Sprayer

With 2-speed pattern control. 100% wide pattern to cover large areas quickly, 25% narrow pattern to move in to closer areas like windows and doors. Convenient backpack for spraying on ladders or scaffolding. Backpack doubles as a storage case. Includes cleaning brush, extra atomizer valve and more.



#56038 2-Ton Cable Puller

Multi-purpose tool can be used in lifting, pulling and stretching. Drop forged safety hooks, stamped and welded ratchet, spool and lever. Preformed galvanized heavy duty cable, easy thumb control reversing ratchet lever. For use in camping, farming, machine shops, fencing and



more.

#56041 Bosch 18V Drill/Circular Saw Combo

Bosch 18V cordless drill, with 6-1/2" circular saw. Corded power in a cordless unit -- power train delivers 3600 RPM for fast cutting. Rear depth adjustment, 50-degree bevel and 45-degree positive stop. Integrated dust collection port vacuums away up to 70% of sawdust. With spindle lock for fast, easy blade changes.



#56046 Gerber Legend® Multi-Plier Tool

All stainless steel hardware and spring-loaded pliers for ease of use. Ergonomically contoured aluminum handles with rubber inserts provide a sure grip. Patented carbide inserts in the plier allow extreme wire cutting ability.





#56047 Router Table
 Converts routers into stationary power tools. Fits most routers with up to 6" diameter base plate, aluminum work surface. Multi-function fence with built-in guard. Table dimensions of 13-1/8"W x 34"L x 11"H.

#56048

Black & Decker Workmate
 Dual height to use as a workbench (30-1/8") or sawhorse (23-1/8"), parallel and diagonal clamping, with a work surface of 24" x 9-11/16".



#56049 Dirt Devil Cordless Hand Vac
 Features 9.6V of cordless power, Quick Flip crevice tool, retractable brush strip aids in cleaning small areas. Ideal for quick pickups. Limited 3-year manufacturer's warranty.



#56051 400 Amp All Season Booster Cables
 Side or top use. Cables are 8 gauge, 12 feet long. Includes convenient storage bag.

#56050 Compact Air Compressor

250 PSI with built-in gauge. Weighs approx. 2 pounds. Compact to be there when you need it. Instructions included.



#56053 Black & Decker Laser Level and Stud Finder

Laser line automatically levels. Detects studs through walls up to 3/4" thick. Rubber overmold for comfortable grip. Hanging pin fastens unit to wall for hands-free use. Target cone for better visibility.



#56057 Olympia Socket Set

For 1/4" and 3/8" drive sizes, standard and metric. With push release ratchet, chrome vanadium steel. Includes bit adapter, bit sets, hex keys, spark plug socket and more.



#56064 Olympia Home Repair Tool Kit

Includes various combination wrenches, various screwdrivers, pliers, hex keys, magnetic bit driver with storage, tape measure and much more.



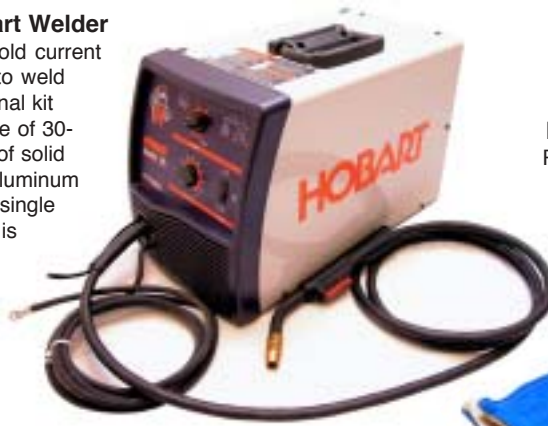
#56055 Olympia 46-Piece Ratchet/Socket/Bit Set
 Includes reversible ratchet with built-in handle storage. 1" x 1/4" drive socket adapter; 9 piece SAE sockets; 10-piece hex bits; 4 pieces each slotted and Phillips bits; with star bits, Robertson bits and more.



#56063 Leatherman Wave Tool
 Multi purpose tool includes needle nose and regular pliers, wire and hard-wire cutters, serrated knife, file, scissors, can/bottle opener, screwdrivers, wire stripper and more. Lanyard attachment. Carry case included.

#56066 Hobart Welder

Operates from 115 V standard household current for maximum versatility. Comes ready to weld with or without shielding gas, no additional kit needed. With an amperage output range of 30-135 it easily handles a broad selection of solid mild steel or stainless, flux cored and aluminum wires. Welds 22 gauge up to 3/16" in a single pass. Built-in contactor eases use and is excellent safety feature -- makes wire electrically "cold" when not welding. 4 output voltage settings; self-resetting thermal overload and motor protection. Comes with built-in gas valve, regulator and gas hose, welding gun, work lead with clamp, power cord and much more.



#56067 Welder's Helmet by Jackson

Plastic welder's helmet by Jackson. 4 x 5 lens, Shade-10.



#56105 Split Cowhide Welding Gloves

Durable high-grade side split cowhide. Cushioned glove lining. Natural wing thumb design, welted seams, and palm and thumb area reinforcements. Stitched with flame-resistant Kevlar. Specify Size S, M, L or XL.



#56073 Black & Decker 2-in-1 Landscape Edger

For sidewalk or driveway edging, and for more creative jobs like trenching or shaping flower bed borders, this one tool does it all. Pull-up edge guide switches from edger to landscape trencher. High torque motor for tough overgrowth. 3-position blade for maximum depth control.



#56068 Coleman 11-Gallon Vertical Air Compressor

Universal motor with patent pending cooling system. Fully integrated regulator, gauges and air outlet. No oil to add or change. With integrated tool holders and tool tray. Maximum pressure: 95-125 PSI. 5.5 peak HP motor. 120V.



#56069 Olympia 3-Piece Pliers Set

Includes 6.5" cutting, 6.5" longnose and 7" lineman's pliers.



#56070 GuardDog Off-the-Wrist Belt Watch

Built to withstand the rigors of the jobsite. Safe on-the-job alternative to a wristwatch, it clips to your tool belt or regular belt. Folds face-first into an impact proof rubber, self-contained case, protecting the hardened crystal face from getting shattered, splattered or otherwise abused. Stainless steel case, water-resistant to 30 meters. Oversized face with large numbers for easy reading.

#56075 Rags in a Box

These workshop paper towels are super strong, even when wet. For a variety of uses in the home, workshop, garden, garage and more. 200 per box.



#56072

Black & Decker Hedge Trimmer

Patented dual action blades cut branches up to 3/4" thick, quickly and easily with 40% less vibration. 3-sided comfort handle provides larger gripping area for comfort and control. Lock-on switch for continuous running; lock-off switch prevents accidental starting. With pre-hardened rust resistant steel blades. Assembled and ready to trim.



#56074 Electric Pole Saw

Cuts branches up to 15' high. Easy locking pole with quick chainsaw disconnect. Easy access adjustment screw keeps chain tight. Non-slip grip for easy and safe use.



#56076 Compact Drill Sharpener

Resharpens blunt and broken drill bits as good as new. Sharpens standard HSS, jobber HSS, cobalt HSS and more. Also sharpen blunt straight-edge knives and scissors with included sharpener model.



#56077 Reciprocating Saw

Powerful 7-1/2 AMP motor to cut through lumber, tree limbs, metal and more. Convenient on-tool storage keeps 2 spare blades handy. Adjustable pivoting shoe offers greater control and stability. Textured soft grip boot.

#56078

Black & Decker Jigsaw

Tough 4 AMP motor. Sightline® channel improves visibility to cut line; Quick Clamp® blade change allows for tool free blade changes. Accepts universal and t-shank blades. Dust blower clears debris from line of cut; on-board blade storage compartment. Convenient lock-on button helps reduce user fatigue.



#56079 Black & Decker Corded Variable Speed Drill

5 AMP motor provides plenty of power for demanding projects. Keyless chuck provides quick and easy accessory changes; variable speed/reversing for controlled drilling and driving. On-board storage to easy access to accessories. Soft grip handle for added comfort and control. 1,350 RPM. Includes double ended screwdriving bit.



#56080 Turbo Shear

Turn your drill into a metal shear! Attaches to standard 1200 RPM A/C or cordless drills. Cuts 20 gauge galvanized steel and other common sheet metals and materials.



#56082 Locking Pliers Set

3-piece set of locking pliers, all with built-in wire cutters. Machined gripping teeth and compound action locking grip. 5", 7" and 10".



#56081 Multi-Piece Screwdriver Set

Includes a variety of slotted and Phillips screwdrivers, from small (3/8" x 2") to extra large (3/8" x 12").



#56083 Propane / Mapp Gas Torch

High temperature torch with cast aluminum body. Regulated to burn upside down. Stainless steel burn tube. Lock button and instant on/off.

#56085 Air Tool Caddy

Keep your frequently used tools within reach. Large pockets and elastic loops keep tools and accessories organized.



#56084 17-Piece Air Tool Set

Includes ratchet wrench, impact wrench, in-line oiler and oil, male fitting, adapter and a variety of sockets.



#56086 Set of 4 (Key'd Same) Padlocks
 Same key opens all 4 padlocks. Use on sheds, gates, tool chests and more. Hardened steel shackle for exceptional cut resistance. Precision pin tumblers for exceptional pick resistance.



#56087 Professional Stapler / Nail Gun
 Heavy duty electric "gun" shoots staples and drives nails. With heavy-duty 10' cord, trigger safety lock. Patented jam-proof drive system. All steel working parts. Works with a variety of staples and nails for home or commercial projects.

#56089 14" Heavy Duty Cut-off Saw

Features quick lock material vise clamp with maximum opening of 9". Adjustable pivoting fence with stops at 45 degrees left and right. One arbor spindle lock for quick blade changes. 100% ball bearing construction and 15 AMP motor that operates at 3,750 RPM. Includes 14 metal cutting blade and blade changing wrench.



#56088 4-Piece Ratchet Tie Down Set

Each tie down strap measures 1" wide by 15' long. Constructed of 1,200 lb. test nylon webbing. 400 lb. load limit. Heavy duty vinyl coated S-hooks.



#56090 9" Bench-Top Band Saw

Includes hex key wrenches for adjustments. Blade measures 1/4" wide by 59-1/2" long. Miter gauge; rack & pinion blade guard and guide assembly. Induction type ball bearing motor. Accepts 1/8" to 3/8" blades; 3-1/2" thickness capacity; 9" throat capacity. 1,650 RPM motor, 2.3 AMP.



#56091 10" Table Saw with Steel Stand

Large area table measures 16-7/8" x 25-5/8" for ripping large pieces of plywood. See-thru blade guard with anti-kickback fingers to protect against kickback injuries. Die-cast aluminum miter gauge for cross-cutting. Quick set self-aligning rip fence; wrench storage.

#56092 Black & Decker 1/2" Hammer Drill Kit

Variable speed/reversing switch for controlled drilling and driving. Powerful 6 AMP motor for demanding tasks. Double gear reduction for longer life and greater torque. Reversing brush system provides full power in forward and reverse. Switch-in hammer action for heavy-duty drilling in wood, steel and masonry. Mid-handle design for balance and comfort. On-board bit storage.



#56093 Black & Decker 3.6V Cordless Screwdriver

Forward/reverse rocker switch easily changes from screwdriving to screw removal. Handle locks in 3 positions for tight spaces. Integrated LED light to illuminate work surface. Includes 2 screwdriving bits and



charger.



#56095 Heavy Duty Worksite Radio/Charger

One hour charger for 7.2V to 18V DeWalt battery packs. Heavy-duty AM/FM radio allows user to listen to radio or CDs. Runs off 7.6V to 18V DeWalt batteries, making it a cordless radio. Digital tuner with LCD display, built-in clock

and station memory presets. High efficiency weather resistant speakers, dual pivoting flexible antenna for better reception.

#56094 Soldering Gun Kit

Heavy duty all purpose soldering gun. Quick heating up to 100 watts. Includes two tips, soldering aid, flexing brush, 5' of solder and storage case.





#56096 Triple-Tap Retractable Reel
Heavy duty metal retractable reel, with brackets for wall or ceiling mounting included. Polarized plug with 3 10-AMP grounded receptacles. LED power status light.
30' cord in 16/3 gauge wire.



#56097 Fluorescent Work Light Reel
Impact resistant retractable reel. Cool running 13w 10,000 hour rated bulb, equivalent to 75w incandescent bulb.
20' retractable cord in 18/2 gauge. High impact lamp protector with high-gloss reflector. Polarized plug, 7 AMP resettable circuit breaker. Rocker on/off switch.

#56098 Heavy Duty Bench Vise

Features 360-degree swivel base with dual locking system. Jaw width is 5"; jaw opening is 5". Replaceable hardened steel jaws. Throat depth of 2-5/8", polished steel anvil for hammering.



#56099 1500-lb. Portable Winch

Hooks up to your trailer hitch or boat trailer for quick on/off loading. A must for traveling off-road or in snow and ice. Features a 14' power cord, 9' remote control lead, and 30' steel cable with hook. Line speed of 6 feet per minute with load.
1,500 lb. pulling capacity.



#56104 Bit Bull® Magnetic Storage Drill Bit Set

Magnets holds drills and trays in place for easy removal and portability. Keeps those drill bits and other accessories right where you need them. Removable tool trays stick to metal, bits are easy in, easy out. Set includes a variety of titanium drills, super masonry drills, countersinks, nut setters, screwdriver bits, doweling centers and more.

#56100 Rear Cargo Carrier

Provides extra cargo space outside your car, truck, SUV and more. Heavy duty steel platform with mesh floor, no assembly required. Mounts on any vehicle with a 1-1/4" or 2" receiver hitch. 12 strategic tie down holes to secure large or small loads. Powder painted for rust resistance. 500 lb. capacity.



#56101 Truck Tire Stand

Perfect for work on your truck or SUV. Enables you to create a step by placing the platform on most tires. Adjustable to fit varying tire widths. Step area designed to reduce slippage. Durable construction; can be folded flat and store easily. Maximum rated capacity of 330 lbs.



#56102 4-Piece Vehicle Service Set

Do-it-yourself auto repair gets easier with this service set. Includes a precision engineered 2-ton hydraulic floor jack, two 2-ton jack stands with adjustable ratchets to secure your vehicle at the height you need. Heavy duty 3/4" steel tube frame creeper with foam padded back and head rest for comfort. Black and red with flames design.

#56103 Pneumatic Roller Seat

Ideal for working on cars and trucks, in the home or in the garden. Adjustable height from 15-3/4" to 21-1/4". Vinyl cushion seat with flame design. Steel caster wheels; metal tray to hold tools while you work.



Note: items that indicate "company logo embroidered" can also be personalized with your name, nickname or initials. Use #57034 on your order form, clearly print the name/initials you'd like embroidered on the award item, and add 4 Safety Bucks.



#57002 Carhartt Duck Active Jacket

12 ounce 100% cotton duck, water repellent (re-treat after washing.) 100% polyester thermal lining, attached thermal lined hood. Zipper front, front hand-warmer pockets. Rib knit cuffs and bottom band. In Brown, Black or Navy.
Regular Sizes: S, M, L, XL, XXL, 3XL
Tall Sizes: M, L, XL, XXL, 3XL
 (Company logo embroidered, left front)



#57020 Pigskin Driver's Gloves

Stays soft, even after becoming wet. Breathable. Shirred elastic back for firm fit.
Sizes: S, M, L, XL



#57029 Carhartt Sandstone Duck Arctic Vest

100% cotton sandstone duck with quilted arctic-weight lining. Zipper front with inside wind flap, two large front pockets with quilt lining. In Dark Brown.
Sizes: M, L, XL, XXL
 (Company logo embroidered, left front)

#57030 Carhartt Sandstone Duck Detroit Jacket

100% cotton sandstone duck, micro-sanded and garment washed for soft finish. 100% polyester blanket lining with quilt lining in sleeves. Triple-stitched main seams. Zipper front, contrasting collar and top pocket welt. Inside welt pocket, left chest pocket and front welt pockets, all zippered. Snap-adjustable waist and cuffs. In Chestnut and Moss (shown).
Sizes: M, L, XL, XXL
 (Company logo embroidered, right front)



#57009 Carhartt Twill Work Shirt

8.5 ounce 100% cotton twill shirt, triple stitched for durability. Button adjustable cuffs. In Chestnut and Moss Green (shown).
Sizes: M, L, XL, XXL
 (Company logo embroidered, left front)



#57021 Thermal Line Cowhide Gloves

Smooth finish, thick cut and very comfortable feel. With thermal lining for warmth, shirred elastic back for firm fit.
Sizes: M, L, XL

#57042 Carhartt WorkCamo™ Active Jacket

12 ounce, 100% cotton duck with Realtree Hardwoods HD pattern. Micro-sanded for soft finish. 100% polyester thermal lining for warmth. Attached hood with drawcord, front hand-warmer pockets and 2 interior pockets. Zipper front, rib-knit cuffs and bottom band, triple-stitched main seams and hanger loop.
Regular Sizes: S, M, L, XL, XXL, 3XL
Tall Sizes: L, XL, XXL



#57047 Carhartt WorkCamo™ Dungaree

12 ounce, 100% cotton duck with Realtree Hardwoods HD pattern. Full seat and thigh, sits at natural waist. Right leg has double tool pocket, left has hammer loop and ruler pocket. 2 reinforced back patch pockets. 19" leg openings to fit over work boots. MUST specify BOTH your waist and inseam sizes when ordering (see sizing chart).



WALLET		28	29	30	31	32	33	34	36	38
INSEAM	28-30									
	31-33									
	34-36									
	37-38									

Note: items that indicate "company logo embroidered" can also be personalized with your name, nickname or initials. Use #57034 on your order form, clearly print the name/initials you'd like embroidered on the award item, and add 4 Safety Bucks.



#57013 Carhartt Extremes Arctic Hood

100% Cordura Plus nylon with 1000 denier, water repellent polyurethane finish on underside of fabric. 100% nylon quilted to polyester arctic weight lining. Velcro closure chin strap. Snaps onto most lined garments. One size fits all. In Black only.



#57014 Carhartt Extremes Arctic Coat

100% Cordura Plus nylon, water repellent polyurethane finish on underside of shell fabric. 100% nylon quilted to polyester arctic weight lining. Snaps for optional hood (see above). Zipper front with wind flap and Velcro closure. Extra large front pockets, rib knit storm cuffs inside sleeves. In Black.

Sizes: M, L, XL, XXL, 3XL
(Company logo embroidered, left front)

#57037 Carhartt Extremes Arctic Zip Front Overall

100% Cordura Plus nylon, water repellent polyurethane finish on underside of shell fabric. 100% nylon quilted to polyester arctic weight lining. High back with elastic suspenders, snap closure on top of bib and at waistband. Leg zippers open to hip with protective wind flap and snap closures. In Black. MUST specify BOTH your waist and inseam sizes when ordering.

WAIST		32	34	36	38	40	42	44	46	48	50
INSEAM	28										
	30										
32											
34											
36											
38											
40											
42											
44											
46											
48											
50											



#57015 Carhartt Arctic Hood

100% cotton duck, water repellent (re-treat after washing). 100% nylon quilted to polyester arctic weight lining. Knit headband, Velcro closure chin strap. Snaps onto most lined garments. One size fits all. In Brown, Black or Navy.



#57004 Carhartt Arctic Bib Overall

12 ounce 100% cotton duck, water repellent (re-treat after washing.) 100% nylon quilted to polyester arctic weight lining. High back with suspenders, reinforced back pocket. Leg zippers open to the knee, with protective wind flaps. Double knees and metal rivets at vital stress points. See chart for sizing. MUST list BOTH your waist and inseam sizes when ordering.

WAIST		30	32	34	36	38	40	42	44	46	48	50
INSEAM	28											
	30											
32												
34												
36												
38												
40												
42												
44												
46												
48												
50												



#57003 Carhartt Arctic Traditional Coat

12 ounce 100% cotton duck, water repellent (re-treat after washing.) 100% nylon quilted to polyester arctic weight lining. Corduroy collar with snaps underneath for optional hood (see above right). Zipper front with Velcro closure. Extra large front pockets, chest pockets.

Rib knit storm cuffs in the sleeves.
In Brown, Black or Navy.

Regular Sizes: 36, 38, 40, 42, 44, 46, 48, 50, 52, or 54

Tall Sizes: 40, 42, 44, 46, 48, 50, 52, or 54
(Company logo embroidered, left front)

Note: items that indicate "company logo embroidered" can also be personalized with your name, nickname or initials. Use #57034 on your order form, clearly print the name/initials you'd like embroidered on the award item, and add 4 Safety Bucks.



#57001 Masterfleece Jacket

Heavy duty poplin with Teflon coating. 80/20 polyester/combed cotton. 13 ounce Masterfleece lining with quilted sleeves, zippered front with zip-thru collar. Concealed storm flap, knit cuffs and bottom band. Two outside zippered pockets, one inside zippered pocket. Available in Black, Red or Navy Blue.
Regular Sizes: S, M, L, XL, XXL, 3XL, 4XL
Tall Sizes: L, XL, XXL, 3XL, 4XL
 (Company logo embroidered, left front)



#57036 "Safety" Striped Jacket

Perfect for walking, jogging, running in low light or at night. Jacket features reflective taping around the chest and both arms. Teklon nylon shell is durable and water repellent. Poly-filled body with heavyweight fleece lining for warmth. Nylon-lined sleeves for easy on/off. Rib knit cuffs and waistband. Two outer slash pockets, one inside pocket, all with zip closures. Available in Black or Navy.
Sizes: S, M, L, XL, XXL, 3XL
 (Company logo embroidered, left front)



#57032 Camouflage Pattern Caps

"Jagged Edge" style caps have camouflage material cut into zigzag pattern, with solid color material around it. Choice of Tan/Camo or Black/Camo.
 (Company logo embroidered, cap front)



#57007 Denim Jacket

14.5 ounce, 100% heavyweight cotton, stonewashed. Extra wide back panel, inside pockets.
Sizes: S, M, L, XL, XXL, 3XL
 (Company logo embroidered, left front)



#57019 Men's Lambskin Leather Jacket

100% lambskin leather with collar, snap cuffs and elasticized leather waistband. Zippered front, 2 front slash pockets with hidden inside breast pocket. Nylon lining with polyester fiberfill.
 In Black or Brown.
Sizes: S, M, L, XL, XXL, 3XL



#57017 Long Sleeve Denim Shirt

6.5 ounce 100% cotton fabric, made extra durable with double-needle stitching. Premium woodtone buttons, button-down collars. Unisex sizing. In Indigo Blue (shown at right) or Light Blue (shown at left).
Sizes: S, M, L, XL, XXL, 3XL
 (Company logo embroidered, left front)



#57041 Microfiber Windshirt

100% polyester microfiber is water- and wrinkle-resistant, soft yet durable. V-neck styled shirt is windproof with ribbed cuffs, collar and waistband. Nylon lined, with side pockets.
Sizes: S, M, L, XL, XXL, 3XL, 4XL
 (Company logo embroidered, left front)

Note: items that indicate "company logo embroidered" can also be personalized with your name, nickname or initials. Use #57034 on your order form, clearly print the name/initials you'd like embroidered on the award item, and add 4 Safety Bucks.



#57010 Zippered Hooded Sweatshirt

9.5 ounce heavyweight 50/50 poly/cotton material, minimizes shrinkage. Non-pilling. With functional muff pockets, full cut double-ply hood for warmth when you need it. In Ash, Navy (both shown here), Steel Gray and Black.
 Sizes: S, M, L, XL, XXL
 (Company logo embroidered, left front)



#57040

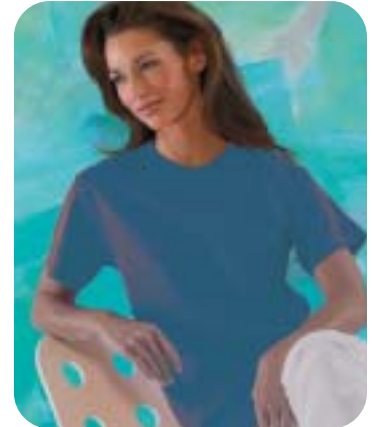
Crewneck Sweatshirt

100% ringspun cotton softness in a durable, 11 ounce heavyweight fabric. With ribbed collar, cuffs and waistband. Relaxed fit. In Sandstone (khaki, shown here), True Royal and True Red.
 Sizes: S, M, L, XL, XXL
 (Company logo embroidered, left front)



#57043 Ladies' Lambskin Leather Jacket

Tailored to fit and flatter the female figure. Made of 100% lambskin leather, with full length front zipper and tapered waist. Side pockets. Features nylon lining polyester fiberfill. Black only.
 Sizes: XS, S, M, L, XL, XXL, 3XL



#57023 Cotton T-shirts

6.1 ounce heavyweight 100% cotton jersey. In Ash, Sand (Khaki), Indigo Blue or Pine Green.
 Sizes: S, M, L, XL, XXL
 (Company logo embroidered, left front)



#57046 Unisex Terry Velour Kimono Robe

One size fits most. Mid-calf length with 3/4 sleeves, 2 patch pockets, double belt loops. Made of 12 ounce, 100% cotton, triple sheared terry velour fabric. One size, 48" long. In White, Burgundy or Navy.

MONOGRAMMING AVAILABLE: indicate either first name or up to 3 initials on your order form. Use #57034 Embroidered Name and add 4 Safety Bucks.



#57044 Ladies' Terry Velour Spa Wrap

Great after shower cover up. Elasticized to provide a secure fit, with adjustable velcro closure. Flattering above knee length. Made of 12 ounce, 100% cotton, triple sheared terry velour fabric. One size, 29" long. In White or Pink.

#57045 Men's Terry Velour Spa Wrap

Great while shaving or lounging after shower. Elastic waistband and adjustable velcro closure. One patch pocket. Made of 12 ounce, 100% cotton, triple sheared terry velour fabric. One size, 20" long. In Hunter Green or Navy.

#57027 Hooded Pullover Sweatshirt

100% ringspun cotton softness in a durable, 11 ounce heavyweight fabric. With ribbed collar, cuffs and waistband. Relaxed fit. In Sandstone (khaki), True Royal Blue and True Red (shown.)
 Sizes: S, M, L, XL, XXL
 (Company logo embroidered, left front)





#52008 Wilson Football
Made of top quality synthetic leather. Official weight and size, for indoor and outdoor use.

#52004 Wilson Basketball
Made of top quality synthetic leather. Official weight and size, for indoor and outdoor use.



#52041 Huffy Portable Basketball System

Complete set up includes a 44" composite backboard, telescoping backboard mount, adjusts the rim height in 6" increments from 7-1/2 feet to 10 feet high. All weather net. Base can be filled with water or sand for added stability.



#52050 Fisher Price® Super Sounds Soccer

2 levels of fun soccer play encourage and reward developing sports skills! Beginners score fun sounds when they kick the ball in the net. The challenge grows along with kids' growing skills -- "pros" have to hit the adjustable target to score fun sounds and hear the announcer shout "GOAL!" Goal is approx. 2' tall x 3-1/2' wide; also includes net, adjustable target, 2 player score keeper and soccer ball. Ages 2 years and up.

#52020 Fisher Price® Triple Hit Baseball

3 fun ways to play help kids learn to bat like a pro. Beginners hit from the tee. A simple adjustment converts this battery-powered trainer to pop-up pitch play for rookies -- balls pop-up from the base, one after another. For the "pros," the trainer can auto-pitch 3 balls from up to 10 feet away. Includes battery powered trainer, bat and 3 balls. Ages 3+.



#52021 Fisher Price® Gro to Pro Basketball

Backboard height starts at 3 feet, adjusts up to 6 feet. Built in wheels, durable backboard and net. Child size ball included. Base can be weighted with sand or water. Ages 2+.

#52049 Fisher Price® Jeep® Wrangler

Just like the real thing - almost! Knobs click, key turns, baja-style windshield. Oversized tires, front brush guard and pretend KC® lights on the overhead sport bar. Rear storage, pretend CB mike and seatbelt add to the grownup style details. 2 riders can drive on hard surfaces and grass in 2 speeds - 2.5 MPH and 5 MPH. Runs on a 12V (9.5 AMP) battery, included. For ages 3 years and up.



#52048

Fisher Price® Kawasaki® KFX Ninja 4-Wheeler

Like riding the real thing! Big, rugged tires let kids take it "off-road" for real riding adventures. 12V of power and a twist-grip throttle kick it into high speed cruise. Drives 2 speed in forward (2.5 mph and 5 mph), 1 speed in reverse, on hard surfaces and grass. High speed lockout for beginners. Power Lock® brakes. For outdoor use only, ages 3 and up.





#52028 Synthesizer Keyboard
 32 keys. Instrument sounds include piano, trumpet, guitar & others. With 8 rhythm sounds, 4 drum sounds, 6 demo songs. With record and playback, auto power off. Built in carry handle. Runs on 4 AA batteries, included. Approx. 14" x 7" x 2".



#52026 Sing-Along CD Player

Top loading CD player with play, pause, skip and search functions. Sing-along microphone included, with volume control and dual jacks. Stereo headphone jack (headphones not included), built-in carry handle. Runs on 8 C batteries, not included. Overall size is 10-1/2" x 14-1/2" x 3-1/2".

#52027 Cool Rocker Guitar

Comes with flashing glasses with adjustable microphone. Plays rock, metal, keyboard tunes and drum sounds. Auto power off. Quick release shoulder strap. Runs on 4 AA batteries, included. Approx. 31" x 9" x 3".



#52001 Electric Ice Shaver

Makes mountains of shaved ice quickly and safely! Child-safe, fun to use and convenient -- uses regular ice cubes. So easy, snow cones can be an enjoyable year round treat for everyone.

#52025 Headset Walkie Talkies

Voice activated with flexible safety antenna and microphone. Safety volume limiter. Powered by 4 button cell batteries per unit, included. Interchangeable color covers.



#52040 Mini Photo Album

Perfect for home or purse! Holds up to 100 4" x 6" photos. In heavy, high-quality sewn leather like cover with brass corners. In Navy.



#52024 Northstar® Star Locator Telescope

525 x 3" Reflector telescope with Real Voice Output. At the touch of a button, this talking telescope describes the night sky in a real human voice. An interactive and educational way to explore the stars. Built in database for 20,000 celestial objects, automatic tracking. Illuminated LCD readout for easy night vision. With tripod and accessory tray.



#52035 Gumball Machine

Antique styling, works with all coins. Die-cast metal base with glass globe. Can dispense up to 13 ounces of gumballs, jelly beans or other candies, not included.



#52039 Explorer 12" World Globe

Geographic detail. Raised-relief, blue ocean on metal gold-colored base. With more than 4,000 place names and political boundary markings.



#52034 Radio Flyer® Rolling Pony

Wide wheel base for stability and safety. Genuine wood head, seat and tail. With durable molded wheels, and a strong steel undercarriage. For ages 1 to 3.



#52031 Radio Flyer® Classic Red Tricycle

Sturdy steel construction, with chrome handlebars and fender. Durable steel spoked wheels with rubber tires; controlled turning radius for stability. Adjustable seat, 10" front wheel. Ages 2 to 4.

#52033 Radio Flyer® Wagon

Full-sized seamless all-steel body with no-scratch edges. Extra long handle for easy pulling, folds under for easy storage. Durable molded plastic wheels. Ages 1-1/2 years +.



#52032 Radio Flyer® Wagon Seat

Turns wagon into a comfortable rider! Seat locks securely in place with integral safety strap. Molded plastic. Ages 1-1/2 years +.



#52011 Fisher Price® Bubble Mower

Dual "exhaust" pipes for blowing out twice the bubbles! Pull the cord for a revving sound like a real lawnmower. With bubble solution. Ages 2+.



#52043 Radio Flyer® Retro Rocket

Realistic astronaut and space sounds, with 3-2-1 blast off feature that puts kids right at the controls! Rolling wheels activate lights and sounds, including light-up after burner, clicking nose cone. Storage compartment. For ages 11 months and up.

#52018 Fisher Price® Rock, Roll 'n Ride Trike

Sturdy trike has 3 fun ways to ride! Rocker, push trike or pedal trike. Ages 1-1/2 to 5. Maximum weight 50 lbs.



**#52017 Fisher Price®
Laugh and Learn Table**

Great learning fun! 2 interactive play modes teach A-B-C's, 1-2-3's, colors, first words, music and much more! Sing along songs, fascinating activities and sounds. Ages 9 - 36 months.



#52045 Fisher Price® Rock-a-Stack

This classic stacking toy takes on a touch of brilliance, with shiny reflections and colorful swirling beads in one of the stacker rings. Baby can learn about colors and hand-eye coordination.



**#52044 Fisher Price®
Speak and Touch Phone**

Babies love this friendly phone and its magic moving mouth! Picking up the receiver gets the conversation rolling. Pressing buttons helps baby learn numbers, counting, shapes and greetings. Pull-along fun for new walkers.

**#52013 Fisher Price®
Sweet Sounds Home**

Sounds in every room! House opens wide for play; everything stores inside when closed.

Includes table, chairs, baby stroller, play center, bed and 2 connectable fence pieces, plus Mom, Dad and Baby. Requires 3 AA batteries, not included. Ages 1-5.



**#52046 Fisher Price®
Animal Sounds Farm**

Fun combinations of animal sounds and a familiar tune bring this farm to life! Hear music, animal sounds in their stalls, rooster crowing and more. Includes Farmer Jed, 5 animals and food cart. For ages 1-5. Needs 3 AA batteries, not included.



**#52014 Fisher Price®
Ramps Around Garage**

With 2 ramps and sounds all around! Raise/lower the elevator, go to the car wash and more. With 2 Little People figures, tow truck, car and connectable fence pieces. Requires 3 AA batteries, not included. Ages 1-5.

#52047 Fisher Price® Laugh and Learn Puppy

This soft, cuddly friend helps baby learn parts of the body with musical games like "Pat-a-Cake" and "Head, Shoulders, Knees and Toes." 2 interactive play modes teach the alphabet, colors and more. Sing-along songs, sounds and fun sayings. For ages 6 - 36 months.



#52012 Fisher Price® Baby's First Blocks

Helps baby learn about identifying and matching shapes. 12 bright blocks ready for baby to sort, stack and drop right through the shape-sorting lid. Ages 6 months and up.





Life Vests

#54027 Youth (for children 30 - 50 lbs.)

#54028 Children's (for children 50 - 90 lbs.)

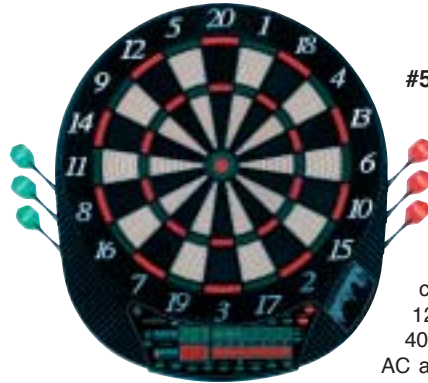
#54029 Adult S / M (one size - chest sizes 30"- 52")

#54030 Adult M / L (one size - chest sizes 48"- 65")

Constructed of 200 Denier nylon inside and out. Youth size (for kids 30-50 lbs., pictured at far right) has built-in collar for head, built-in crotch strap to prevent riding up, and grab strap. All other sizes with (3) 1" belts and welt trim.

#54031 "Wild Thing" Towable

Large 66" diameter totally covered tube. Low-profile for a thrilling ride! Special neoprene knee pad in the center, 6 finger grip handles, oval knuckle pads. Recessed valved, quick hitch deluxe harness.



#54025 Electronic Dartboard

Computerized scoring with electronic voice announcer and score indicating sound effects. 14 games with 84 variations, along with competing against the computer. Set includes 12 brass soft tip darts, 40 replacement tips and AC adapter.

#54009 Hard Cue Case

Durable, hard vinyl case with two padded compartments. Carries one 58" 2-piece cue. Lightweight. Measures approx. 36" x 2" x 3.



#54008 Maple Pool Cue

58" maple cue with stainless steel shaft, 13mm fiber ferrule, maple/arch design/nylon handle and mushroom bumper.



#54037 Wilson ProStaff®

Men's Right-handed Golf Clubs

#54038 Wilson ProStaff®

Men's Left-handed Golf Clubs

Features 100% UST Graphite shafts, Winn wrap grips. 440cc driver with translucent crown finish;

431 stainless steel iron head with copper weight and metal medalion. Includes 1-3-5 woods, 2 hybrids, 5-6-7-8-9-PW.



#54039 Wilson ProStaff®

Women's Right-handed Golf Clubs

#54040 Wilson ProStaff®

Women's Left-handed Golf Clubs

Same specifications as Men's set at left, but with true ladies' characteristics. With 400cc driver. Includes 1-3-5-7-9 woods, 5-6-7-8-9-PW irons.

#54042 Stand Golf Bag by Burton

Lightweight yet feature-packed design. With nine separate use-specific pockets and backpack inspired handles. Weighs just over 4 lbs. for the ease of use that walking golfers need. Full length 5-way dividers. Made of

durable 150D nylon.



#54001 Wilson Golf Bag

This top notch bag is made of 600D polyester and Dobby nylon for strength and durability. Tube construction, with various pockets and extra large gusset on clothing pockets. Padded strap, umbrella strap, tee holder and rain/travel hood. Weighs less than 5 lbs.



#54034 Cart Golf Bag by Burton

Incorporates a 14-way full length divider top, putter tube and large easy access front pockets. This graphite-friendly cart bag is the smart choice for the riding golfer. 9-1/2" top with zippered hood. Made of durable 420 doobby nylon.





#54017 Deluxe Duffel Bag
 Sporty bag that's ideal for the gym or travel. Large zippered main compartment with zippered front and end pockets. Adjustable shoulder strap is detachable. Measures 20" x 13" x 11".

#54026 Metal Detector
 Two-piece adjustable aluminum stem with S-rod handle. 1/4" headphone jack, internal speaker and sensitivity adjustment. 3-tone audio, low battery indicator, LCD readout with touchpad selection control panel. Manufacturer's 5 year limited warranty.



#54007 Daisy Red Ryder BB Gun
 Hardwood stock and forearm, lever cocking spring air action. Shoots .177 (4.5mm) BBs. Front sights, stamped metal receiver and smooth bore steel barrel. 650 shot capacity at maximum of 195 yards at 280 fpt. Overall length: approx. 36".



#54023 Bushnell Night Vision Monocular
 Compact and lightweight monocular offers outstanding clarity in the darkest conditions. Does not require an active infrared light source; instead it amplifies available ambient light. Built-in infrared illuminator for enhanced images. 2.5 x 42mm magnification, 4 to 600 feet viewing range.



#54097 Brass Classic Handheld Telescope
 12 x 30mm handheld telescope is handcrafted from polished brass and soft leather jacket. Fully coated 30mm objective lens with 12x magnifying power. Twist focus for sharp images. Retracts to 5-1/2" and includes zipper belt case and hand strap.



#54073 Nightblaster Headlamp / Mini Lite
 Great for night hikes and finding your way back to camp. Triple white LED headlamp with adjustable aim. Red LED for non-intrusive light. Use with nylon adjustable strap or clip-on. Includes 3 AAA batteries.



#54089 Original Jerky Cannon®
 Heavy duty jerky maker holds 1-1/2 pounds of meat. Barrel is made of anodized aluminum, with flared ends for easy loading and piston insertion. Comes with 2 stainless steel nozzles (flat stick and round stick) and jerky seasonings. Includes nylon brush to make cleaning a snap.



#54090 Extra Barrel - Jerky Cannon®
 Extra barrel for those who make a LOT of jerky at one time. Barrel holds 1-1/2 pounds



#54091 Jerky Pan & Rack
 Use this large pan and rack combo to make jerky or sausage in the oven. Sturdy 18" x 13" rack has feet to enable it to be stacked for drying several racks at one time. Improves circulation around meat and speeds drying time. Each rack holds approximately one pound of meat in strips. Includes pan and 3 racks.



#54092 Camo Freezer Paper
 Quick and easy way to distinguish your wild game from the rest of the items in the freezer! Poly-coated freezer paper protects meat for months. Sheets measures 15" x 18" and come 100 to a pack, enough to wrap 3 to 4 deer.

#54060 Schrade Old Timer Fillet Knife

12" Pro Fisherman fillet knife. High carbon steel blade, for strength and sharpening ease. Practically indestructible Delrin® handle. Includes carrying sheath.



#54062 Wyoming Saw

Take-apart saw assembles in seconds. Stainless steel frame, die-cast aluminum handle and 11-1/8" long blades with cordura case.



#54065 Gerber E-Z Out Folding Knife

Convenient one-handed opening make this the perfect clip pocket knife. Special rubber inserts provide comfortable grip during use. Pocket clip is stainless steel, removable and replaceable. Full size knife is lightweight enough to be carried around everyday. Blade measures 3-1/2"; knife is 8" when opened.



#54061 Gut Hook Knife & Axe Combo

Knife measures 9-3/16", skinning blade is 3-7/8" high carbon stainless steel with gut hook. 11" hunter's axe has a 2-7/8" carbon stainless steel blade with black powder finish. Combo sheath holds both pieces.



#54099 Western Fixed Blade 2 Knife Combo

One knife measures 8-3/4" with a 4-1/8" hollow ground clip blade; other knife measures 6-1/2" with a 2-3/4" hollow ground clip blade. With carrying sheath.

#54059 Wildlife Calling System

Self-contained electronic audio system, powerful output amplifier and CD player offers great sound. 15-watt, weather resistant speaker provides more than ample volume for calling coyotes, bobcats, foxes, crows and snow geese. With a self-contained weather resistant carrying case with built-in handle. Powered by 8 D-size batteries, not included. 3-year manufacturer's warranty.



#54067 Innotek Dog Training System

Designed for ease of use for training your hunting dog with no programming or set-up needed. Advanced digital display and offers continuous or momentary tap stimulation. Seven stimulation levels. Waterproof collar receiver, rechargeable NiMH batteries. 1,000 yard range, low battery indicator. Includes charger, carrying case and training video.



#54068 Innotek 2 Dog Training System

Same features as #54067 Dog Training System above, but for 2 dogs. Interchangeable collar probes, and individual stimulation settings for each dog. Differs from #54067 in that it does not include momentary tap stimulation feature.



#54093 Pet Porter - Large

Measures 36" x 24" x 26" and is suggested for smaller Labradors or other hunting breeds, 50 to 65 lbs. Heavy duty plastic casing, wire door and plastic wing nuts that won't corrode. Meets airline requirements. 1 year manufacturer's warranty.

#54094 Pet Porter - Extra Large

Measures 40" x 27" x 30" and is suggested for large dogs such as Labradors, pointers, German shepherds, etc. Heavy duty plastic casing, wire door and plastic wing nuts that won't corrode. Meets airline requirements. 1 year manufacturer's warranty.



#54078 Portable Doggie Canteen

Great for out in the field or just taking the dog for a walk! 28 ounce canteen features a nested, wide-body bowl that makes a convenient drinking dish. Easy grip handle and adjustable shoulder strap for carrying. Closable nozzle so you won't waste a drop. Rugged plastic construction.





#54019 Bushnell Trophy Spotting Scope

The ultimate portable, all weather spotting scope for trophy hunting and birding. 20-60 x 65mm, compact, rubber armored to be 100% waterproof. Porro prism and multi-coated optics ensure bright, clear views. With carrying case.



#54020 Bushnell Camouflage Spotting Scope

Bushnell Sentry 18-36 x 50mm Spotting Scope. Fully coated optics, protective rubber armor and compact tripod. With carrying case.

#54024 H2O Field Fanny Pack

Quiet cloth construction in camouflage print, with 2 large zippered compartments, two 21 ounce bottles and compression strap.



#54066 Gambrel & Hoist Magnum

One person, heavy duty lift system. Hoist locks securely in place and uses a standard double pulley system. Polypropylene rope is twist free and rot resistant. Weight limit of 500 lbs.



#54072 Nikon Spotting Scope Outfit

Lightweight and compact with powerful 16 x 48 power optics that are fully multicoated. Built-in sliding sunshade and peep sight. Rubber armored, waterproof and fogproof. Comes with compact tripod and carrying case.



#54054 Kolpin Archery Arrow Box

Holds up to 12 arrows with broadheads. Durable high density polyethylene exterior, hinged top and locking front. Designed to fit into side pocket of Kolpin Bow Case shown at bottom of page.



Browning Rage® Archery Bow Combo

The ideal bow for the hunter looking for value without sacrificing speed. With an incredible 10" of draw length adjustability in the HyperMax 10® cam and a beautiful BreakUp® finish. Machined aluminum riser makes it accurate and easy to tune. Dynafite® string and 450 plus cables. Combo includes 2-piece four arrow quiver in painted BreakUp®, Lightning® sight with three fiber optic pins, TM Hunter arrow rest, wheel peep sight and nock set. Left hand models also available.



#54079 Warrior Jr. Bow Set

Draw length of 23", 24" 25"; draw weight of 30 to 40 lbs. Composite limbs and riser. Right-handed integral grip. Set includes 2 Safetyglass® arrows, sight and quiver. Camouflage pattern.

#54055 Righthand 45# - 55#

#54056 Righthand 55# - 65#

#54057 Lefthand 45# - 55#

#54058 Lefthand 55# - 65#

#54053 Kolpin Evolution® Bow Case

Exterior is constructed of heavy-weave polyester, with thick foam padding and weather tight polyester lining for superior protection. Full length zipper for easy access. Rugged web handle, accessory pocket. 46" in length, in RealTree® Hardwoods® pattern. Outside pocket holds the #54054 Arrow Box shown above.





**#54010 Prone Position
Versa-Pod Bi-Pod**

**#54011 Sitting Position
Versa-Pod Bi-Pod**

Pan, tilt and cant movements. Quick attach and detach with universal mounting adaptor (included), non-skid, non-marring rubber feet. One-touch leg adjustment allows for both legs to be lowered to desired height with your non-shooting hand. Prone position designed for general prone use or shooting from bench top. Sitting position raises barrel from 15-1/2" to 23-3/4" in 11 increments.



#54013A Kolpin Gun Boot® Lifter Kit

Molded perfectly to accommodate the Gun Boot® Bracket (see #54013) and provide more ground clearance. Made of high density, fiberglass reinforced polyethylene.



#54098 Bi-Fold Loading Ramp

Perfect for loading ATVs, motorcycles, lawn mowers and more, with ease! Full-size ramp is rugged 16 gauge steel with black powdercoat finish that fights rust. Plastic covered tabs keep it from scratching your tailgate; safety chain holds it securely in place. Fits between wheels; handles up to 1,000 lbs. Open, it measures 66" x 43"; closed, 66" x 21-1/2".



#54012 Kolpin ATV Gun Boot®

Polyethylene shell provides heavy duty protection and accommodates both left- and right-hand bolt action rifles or shotguns. Accepts 50mm scopes. Airline approved. Order the #54013 Bracket for Gun Boot® separately, shown at right.



**#54013 Kolpin
Bracket for Gun
Boot®**

One piece, high density, fiberglass reinforced polyethylene bracket, design eliminates wobbling and bouncing. Mounts to either side of ATV. Metal wire pin lock keeps Gun Boot® case in place. Mounting hardware accommodates tubular racks.

**#54063 ATV Fender
Cargo Bag**

Fits quickly and adds extra storage to any ATV with a front or rear rack. 2 big zippered cargo compartments with exterior gear pockets. Protective foam shell cushions your cargo. Bottom shock cord with detachable hooks, attaches quickly with an adjustable strap and quick release buckle. In Timber camouflage pattern.



#54064 ATV Rear Rack Organizer

Big pockets with foam bottom protect your accessories and gear. Organizer quickly fits standard ATV rear racks with 8 adjustable straps. 3 big zippered pockets to organize clothes and gear, foam base protects valuables. Big center area can hold a cooler or box. Webbing straps store tools or provide cargo lash points. In Timber camouflage pattern.





#54074 Double Gun / Scoped Rifle Case

Comfortable molded-in handle, high density foam inserts to protect your firearms. Airline approved, lockable. Black. Overall size is 51.5" x 15" x 4".



#54015 Softside Camouflage Gun Case for Scoped Rifles

#54016 Softside Camouflage Gun Case for Shotguns

Heavy weave ballistic nylon, camouflage pattern with black lining and padding. Wrap-around handles, full length nylon coil zipper, muzzle protector. 46" long for scoped rifles, or 52" long for shotguns.



Bushnell Trophy Rifle Scopes

#54021 3-9x40mm Scope

#54022 6-18x 40mm Scope

Multicoated optics for increased brightness in low light. Fast-focus eyepiece, wide angle field of view. 100% fogproof, waterproof and shockproof construction. With Multi-X® reticle, matte finish.



#54070 Nikon Monarch Series Rifle Scope

Super high resolution lenses are 100% fogproof, shockproof and waterproof. 3-9x40 mm. Fully multicoated lenses for unsurpassed light transmission and contrast. Full lifetime manufacturer's warranty. Black matte finish.



#54071

Nikon Buckmaster Series Rifle Scope

Fully multicoated lenses for unsurpassed light transmission and contrast. Super high resolution lenses are 100% fogproof, shockproof and waterproof. 4-12x50 mm. Hand-turn 1/4 MOA, metal-on-metal, positive click adjustments. Full lifetime manufacturer's warranty. Black matte finish.

#54069 Leupold Duplex Rifle Scope

Versatile, mid-range magnification (2-7x33mm) useful for close cover as well as on more open terrain. Provides clear, bright images. Easily mounted close to the rifle, making it a great choice for those seeking a low profile optical sight. Full lifetime manufacturer's guarantee. Black matte finish.



#54075 RCBS Reloading Starter Kit

Includes reloader special-5 press, 5-0-5 scale, case loading block, case lube kit, primer tray-2, powder funnel, deburring tool and spear, and reloading manual.



#54076 Beta Chrony

Measures high, low and average velocities, extreme spread and standard deviations. 60 shot memory and permanent memory. Can be switched off, taken home and switched on for reviewing information, retrieval or downloading onto your computer. Moves instantly from string to string.

#54096 Daiwa Spincast Mini System

Includes spincast reel, aluminum frame, ball bearing drive. Prewound with 4 lb. test line. 5-piece, 4.5' graphite composite ultra light casting rod. Molded case included.



#54095 Daiwa Spinning Reel Mini System

Includes ultra-light spinning reel, ball bearing drive in super compact form. No wobble rotor. 5-piece, 4.5' graphite composite rod, ultra light with foam grip. Line and carry case included.



#54045 Fenwick Executive Fishing Kit

Includes a deluxe ten ball bearing spinning reel with spare spool, a world class fly reel and a 4-piece spin-fly combination rod. Packaged in a solid wood box.



#54088 Spinning Reel

Shakespeare Dimension spinning reel features 9 ball bearings, one-way clutch instant anti-reverse bearing. Holds up to 195 yards of 10 lb. test. Medium/ freshwater action. Smooth multi-disc drag system.



#54032 Eagle Claw Filled Tackle Box

Includes a 300-piece assortment of hooks and lures. 30 individual compartments and deep lower section.



#54081 Ugly Stik Cast Rod & Low Pro. Baitcast Reel Combo

Ugly Stik cast rod measures 5'6" and features straight-handle casting. Medium-light action for 4-12 lb. test. Blank-through-handle construction for added strength and sensitivity. Reel is the Prius LP model with easy-cast thumb bar, graphite spool; ball bearing. 5:1:1 gear ratio. Holds up to 150 yards of 12 lb. test.



#54087 Ugly Stik Rod & Spincast Reel Combo

Ugly Stik cast rod measures 5'6" and features straight-handle casting. Medium-light action for 4-12 lb. test. Blank-through-handle construction for added strength and sensitivity. Reel is Synergy Titanium series spincast with two ball bearings, stainless steel covers, filled with 10 lb. supreme line. Medium/ freshwater action. On/off anti-reverse and bait clicker.



#54085 Ugly Stik Spinning Rod & Spinning Reel Combo

Ugly Stik spinning rod measures 6'. Medium action for 6-15 lb. test. Blank-through-handle construction for added strength and sensitivity. Reel is the Prius Freshwater Spinning Reel with E-Z Cast® trigger and self-centering bail. Smooth multi-disc drag system. On/off anti-reverse; left/ right hand retrieve. Two ball bearings. Holds up to 145 yards of 8 lb. test.



#54082 Shakespeare Rainbow Spincast Combo

E-Z Cast® spincasting reel with line. 2-piece medium action solid glass rod (4'6") with soft-touch rubber handle. Various rainbow color reels and handles.



#54083 Shakespeare Rainbow Spinning Combo

Graphite spinning reel with line. 4'6" two-piece light action solid glass rod with soft molded handle. Various fluorescent color reels and handles.





Stockingfoot Men's or Women's Breathable Waders by Hodgman

Features Supplex® outer shell and Hodgman's exclusive Horco-Tex® CL Plus waterproofing, which allows moisture vapor inside wader to pass thru to the outside. Double taped neoprene booties with attached gravel guards & lace hooks. Removable suspenders, side cinch straps, zippered storage compartment & top drawstring. Lightweight, remarkably durable. In Sage. SEE SIZING CHART at right.

#54046 Regular Sizes S-XXL

#54047 Long Sizes M-XXL

#54048 Stout Sizes S-XXL

#54049 Women's Sizes XS-XL

Breathable Wader's Size Chart

Size	Max. Foot	Max. Inseam	Max. Girth
XS	9	29"	40"
S	9.5		30"
	43"		
M	10.5	32"	45"
M-stout	10.5	32"	56"
L	11.5	33"	47"
L-long	11.5	36"	47"
L-stout	11.5	33"	56"
XL	12	33.5"	50"
XL-long	12	36.5"	50"
XL-stout	12	33.5"	60"
XXL	14	34"	54"
XXL-long	14	37"	54"
XXL-stout	14	34"	61"
Women's Sizes			
XS	9	30"	36"
S	9.5		31"
	38"		
M	10	32"	40"
L	10.5	33"	43"
XL	11	33"	47"



#54043 Convertible Wader Vest by Hodgman

Roll-down back panel helps dissipate body heat on warm days. Soft rip-stop nylon material lightweight strength. Includes 23 functional pockets. Rod holder loop & tab and accessory D-rings. Includes wool fly patch. In Sage.

Sizes XS, S, M, L, XL, XXL.



#54051 Abel® X-Stream Rod/Reel Kit

Reel is balanced with a machined Delrin handle. Rod is a 4-piece 100% high modulus graphite utilizing the same easy to cast design with fish-lifting capabilities as Abel's regular rods. Hand wrapped, superior components and precision fit. Rods have a lifetime manufacturer's warranty. Combo: 4-5-6 line weight; cork disc drag (5.3 ounces); 5-weight rod with case included.



#54044 Pontoon Float

Combines an aluminum frame with 8' pontoons for great performance and portability. Material is 30 gauge PVC, pontoon cover material is 840 denier nylon. Weight capacity is 375 pounds. With high-volume 2-way pump.



#54006 U-Shape Float Tube

Two large storage/gear pockets with 2 additional zippered compartments. Polyurethane coated Denier nylon oxford and double-needle stitched seams, suspenders, D-ring and fly patch.



#54077 Boathide™ Pontoon Boat Duck Blind

For 8' pontoons, made of rugged 600 denier polyester in camouflage pattern. Takes you hunting in places that were unreachable before in complete stealth and concealment. Loaded with features including detachable shell loops, detachable stuff sack/storage pocket, web brush loops, zipper access to cargo deck and much more. Built in padded gun sleeve. Sets up in about 2 minutes.



#54050 Float Tube Fins

Vented blade for efficiency. One size fits most waders.

Note: due to constant changes in the electronics market, awards in this category may be substituted with items of equal or greater value, and may not necessarily be the name brand shown here. We **will** offer the models shown in the catalog for as long as they are available to us, but manufacturer's updates frequently require us to find new models. Feel free to contact us before placing your order if you have questions about a specific award item.



#53001 Sony Home Theater Sound System

Includes 5-disc changer DVD player with progressive scan; AM/FM radio tuner; 5 speakers and subwoofer. Main speakers feature 108 watts of power output; subwoofer features 110 watts. Total system power is 800 watts. Plays DVD video, CD audio, CD-R and CD-RW discs, as well as MP3 files. Dolby Digital®, DTS® and Dolby ProLogic II® sound capabilities.

#53032 Portable DVD Player

With 5" LCD screen. Plays DVD, CD, CD-R/RW and MP3 files. Built-in stereo speakers. Lithium-ion rechargeable battery included.



#53007

20" TV/DVD Combo

20" color television with built-in, full-featured DVD player. Stereo TV, coaxial digital audio output, front A/V inputs, sleep timer and remote control.



#53008 Samsung MiniDV Camcorder

MiniDV format records to mini DV discs. Features include 20x optical zoom, 900x digital zoom, 2-1/2" LCD screen and view finder. Snapshot capable with memory stick slot. Includes AC adapter and cord, shoulder strap, USB software and more.



#53029 Spyke-It Desktop Media Holder

Keeps your latest media right at your fingertips. Holds CDs, DVDs or games.



#53010 Camcorder Tripod

With bubble level, quick-release leg clamps, locking head. Adjustable tension center column and tension head, rubber feet with retractable metal spikes. Overall height: 54".



#53028 Toshiba DVD/VCR Combo Deck

Combines picture and sound advantages of DVD with convenient recording playback options of a VCR. Plays DVDs, CDs, CD-Rs, etc. VCR is hi-fi stereo with high speed rewind and front A/V inputs.



#53009 Sony 5-Disc Progressive Scan DVD Changer

Features 5-disc DVD/CD changer. Plays variety of discs, including CDs, CD-R/RWs, DVD-Rs and more. With Dolby® Digital and dts® 5.1 surround sound modes.

Note: due to constant changes in the electronics market, awards in this category may be substituted with items of equal or greater value, and may not necessarily be the name brand shown here. We **will** offer the models shown in the catalog for as long as they are available to us, but manufacturer's updates frequently require us to find new models. Feel free to contact us before placing your order if you have questions about a specific award item.



#53002 Shelf Stereo System with 5-CD Changer

Built-in 5-CD changer with digital synthesizer tuner and remote control. Includes cassette player with autoreverse. Removable speakers. Can play MP3 files.



#53037 Multi-Media Storage Unit

T-wood storage unit holds up to 84 CDs, 60 DVDs or 30 VHS tapes. Natural and Black with wire accents. Measures just over 26" tall.



#53027 Personal CD Player

With CD, CD-R/RW and MP3 playback. Dynamic bass boost system. Jog proof, with 100 second anti-skip protection. Uses 2 AA batteries, not included.



#53014 Visor CD Case

Holds 20 CDs in standard, non-static slots. Velcro closure.

#53043 CD Wallet

Double-sided storage system holds 64 CDs or 32 CDs with booklets. Includes SafeSleeve®, which is durable and scratch-free. Snap-on key holder. In Black nylon.



#53040 Sirius Satellite Radio Boombox

Take Sirius satellite radio with you wherever you go! Built-in digital AM/FM tuner with portable AC/DC operation. 40 station presets. Integrated carrying handle. (Requires subscription to SIRIUS satellite radio service.)



#53041 Sirius Satellite Radio Receiver System

Everything you need in one box: built-in transmitter, 20 channel presets, suction cup car mount and home stand, with antennas for home and auto. (Requires subscription to SIRIUS satellite radio service.)



#53039 iPod Nano

With 2 GB internal flash memory to store up to 500 songs. Ultrathin design is just 1/3" thin and weighs 1-1/2 ounces. Color LCD screen displays album art while music plays. Supports podcasts, plays downloaded audiobooks and more. Requires PC with Windows 2000 or later, XP Home or Pro (SP2) or later; Mac with OS X v.10.3.4 or later. USB 2.0 port required for high-speed transfer.



#53034 Digital FM Transmitter

Now you can use your iPod, PDA, MP3 player or laptop to listen to your favorite tunes through any FM stereo receiver. Connects your portable music player to your car or home stereo quickly and easily using FM radio waves. Includes a power cord that connects to your car's cigarette lighter to preserve your batteries while you listen on the road.

Note: due to constant changes in the electronics market, awards in this category may be substituted with items of equal or greater value, and may not necessarily be the name brand shown here. We **will** offer the models shown in the catalog for as long as they are available to us, but manufacturer's updates frequently require us to find new models. Feel free to contact us before placing your order if you have questions about a specific award item.



#53015 Power Zoom AF Camera Kit

Compact 35mm camera with 2.5x zoom feature (38-90mm power zoom lens). Motorized film advance and rewind, auto shut-off after 5 minutes. Automatic flash with fill-in option, off mode. Self timer, red eye reduction system and tripod socket. 1 year manufacturer's warranty.



#53033 Digital Photo Printer

Lab quality prints from your digital camera. Prints in either 3-1/2" x 5" or 4" x 6" formats. PC-free printing with PictBridge® technology, makes prints right from your camera.



#53019 Sony Digital Camera

4.1 megapixel digital camera with 3x optical zoom. With 32 MB of built-in memory, large 1-1/2" LCD monitor and PictBridge technology for easy printing to compatible printers without the need of a computer. Consistently beautiful images every time. Built-in flash. Includes A/V and USB cables and photo software.



#53021 CD Alarm Clock Radio with Phone

Top loading CD alarm clock radio. Programmable track memory with play/pause, search and repeat. Large LED display with dual alarm function and snooze. Built-in nightlight. Includes a 2.4 GHz cordless phone.



#53003 Stereo CD Alarm Clock Radio

This MP3 compatible stereo alarm clock lets you choose a wake up call that suits your mood. Great features like built-in CD player, easy to read LCD readout, 3 alarm system. Digital AM/FM tuner with 39 station presets and sound virtualizer.



#53042 Micro CD Stereo System

Top loading CD player with AM/FM tuner. Multi function backlit LCD display. Wide range speaker system with dynamic bass boost. Full function remote control.



#53020 Timex Alarm Nature Sound Clock Radio

Large snooze button and easy to ready green LED display. Gentle wake alarm wakes you with slowly rising volume. Sleep to radio with 59-minute sleep timer, or to your choice of nature sounds. With battery backup.



#53030 Projection Alarm Clock

Radio controlled time and date, projects time onto wall or ceiling. Projection can be rotated for proper viewing. AC adaptor included. Also tracks indoor temperature and humidity.



#53038 BOSE® Wave Radio Alarm

Patented acoustic waveguide technology produces a rich, powerful sound. AM/FM station presets. Two alarms with preset volumes. Credit card sized remote control works from across the room.

Note: due to constant changes in the electronics market, awards in this category may be substituted with items of equal or greater value, and may not necessarily be the name brand shown here. We **will** offer the models shown in the catalog for as long as they are available to us, but manufacturer's updates frequently require us to find new models. Feel free to contact us before placing your order if you have questions about a specific award item.

#53022 Casio Full Size Keyboard

61 full size keys, 12 note polyphonic.
100 rhythm patterns, 100 demo songs.
LCD window for on-screen music staff and finger icons display notes and chords.
Tuning control, MIDI in/out jack, 2 built-in speakers, headphone jack, sustain pedal jack.



#53005 Motorola 2-Way Radios

Can reach up to 8 miles and is ideal for outdoor adventures. With a feature called iVox that allows for handsfree operation with optional headset (not included). Sleek and compact enough to fit in the palm of your hand. Batteries not included. Includes 2 radios.

#53031 95 Watt DC/AC Power Inverter

Provides household AC power direct from vehicles DC accessory outlet. Powers laptop computers, video games, TVs, radios and stereos. Recharges cell phones, digital cameras and more. Power plug adjusts to a 45-degree angle.



#53026 Rechargeable Cordless Razor

Features Patented Norelco Lift-and-Cut technology to shave hair below skin level. Multi-directional flexible razor heads for a contoured shave. Self-sharpening blades to extend the life of razor heads. Dual LED charge signals. Full-width pop-up trimmer.



#53006 Multi Handset Cordless Phones

Dual handsets feature Caller ID and extra charging cradle. Digital answering system. Numerous ringtone options with earpiece and ringer volume control. Find lost handset paging key. Wall mountable; belt clip included. Headset compatible for gamers or hands free use.

#53035 Shower Clock Radio/CD Player

With fog resistant mirror and splash resistant cabinet. AM/FM radio and vertical loading CD player with programmable memory. Digital LCD clock runs on battery and is AC adaptable (AC adaptor not included.)



#53017 Midland Portable CB with Weather Band

40 channels plus 10 channel monitor provides local weather and hazard info. Memory channel scan, lighted LCD readout, battery pack for 6 AA batteries, not included, removable flexible antenna. Remove battery pack to convert into mobile CB receiver.



#53036 Weather Band Radio

AM/FM weather band radio receives instant weather forecasts on all 7 weather band frequencies. Storm alert alarm. Carrying strap and telescopic antenna. Includes AC adaptor, also runs on 4 AA batteries, not included.

About our Black Hills Gold and Black Hills Gold on Silver Jewelry

- Rings are available in whole and half sizes as follows:
Men's Gold on Silver: Sizes 9 - 13
Ladies' Gold & Gold on Silver: Sizes 5 - 9
- Gold earrings have 14K gold posts
- Gold jewelry items are 10K gold
- Gold on Silver items are sterling silver and 12K gold

Some images enlarged to show detail



#59012
Pierced Earrings



#59013 Trio Pierced Earring Set
(comes with stamped gold leaves as shown, plus posts with gold ball, pearl and synthetic birthstone (specify birthstone when ordering))



#59006 Initial Pendant
(specify initial when ordering)



#59007 Frog Slider
Necklace w/ 20" chain



#59009 "Double Dolphin"
Slider Necklace w/ 20" chain



#59014
Necklace



#59015
Necklace



#59016 Three-Piece Black Onyx Set
(includes necklace, earrings and bracelet)



#59018 Three-Piece Set
(includes necklace, earrings and bracelet)



#59010 Ladies' Ring



#59011 Ladies' Ring
with Cubic Zirconia

IMPORTANT
PLEASE ORDER YOUR CORRECT RING SIZE
Stec's CANNOT accept returns on rings. Any costs for resizing rings are your responsibility through your local jeweler.



#59008
Ladies' Leaf Ring



#59017 Men's Ring

About our Costume Jewelry

- Features cubic zirconia, crystals and synthetic stones
- Features sterling silver, silverplate and goldplate metals
- Half-sizes NOT AVAILABLE
- Men's rings available in even sizes 8 - 13
- Ladies' rings available in sizes 5 - 10 unless otherwise indicated



#59002 Men's Tiger
Eye Fashion Ring



#59005 Ladies' Gold/
Crystal Birthstone Ring
(specify birthstone when ordering)



#59003 Birthstone Band
Pendant w/ 24" Chain
(includes first pendant as shown - specify birthstone when ordering)

#59004 Additional
Birthstone Pendants
(specify birthstone when ordering)



#59019 Genuine Diamond
Solitaire Earrings

Hand selected diamonds set in 14K yellow gold. Earrings are .20 twt, with push-on, screw-off posts for added security.



#59001 Cherry
Finish Jewelry Box
This jewelry box is a beautiful way to keep your special jewelry organized. Blue velvet lining. Measures 9-1/2" x 6-1/4" x 3-1/4".



#59020
Strap Watch
Atomic time and date, automatically updates for daylight saving time. Features a 12- or 24-hour display, perpetual calendar and time zone setting. Water resistant case. Metal and plastic band with removable links to adjust size.